

Also available in white.

**PEAVEY**<sup>®</sup>  
ARCHITECTURAL ACOUSTICS<sup>®</sup>

# PR™-603

## SPECIFICATIONS

### SPECIFICATIONS:

#### Frequency Response:

70 Hz - 20 kHz, ±3 dB

#### Low Frequency Limit: (-3 dB point)

70 Hz

#### Useable Low Frequency Limit: (-10 dB point)

50 Hz

#### Power Handling:

30 watts continuous (15.5 volts RMS)  
60 watts program

#### Sound Pressure Level 1 watt at 1 Meter Swept Sine Input in Anechoic Environment:

84 dB

#### Maximum Sound Pressure Level:

98 dB

#### Radiation Angle Measured at -6 dB Point of Polar Response

Horizontal Plane:	Vertical Plane:
<b>250-500 Hz</b> 360°	<b>250-500 Hz</b> 360°
<b>500-10,000 Hz</b> 175° ±85°	<b>500-10,000 Hz</b> 150° ±85°
<b>10,000-16,000 Hz</b> 80° ±15°	<b>10,000-16,000 Hz</b> 70° ±10°

#### Directivity Factor Q

#### 500 Hz-16,000 Hz Median:

4.3; +6.6, -2.2

#### Directivity Index Di 500-16,000 Hz

#### Median:

6.3 dB; +4.0 dB, -3.0 dB

#### Transducer Complement:

One 5¼" special design woofer,  
one 1" soft dome tweeter

#### Tuning Frequency (F<sub>box</sub>):

Sealed box resonance: 88 Hz

#### Crossover Frequency:

3.0 kHz

#### Crossover Type:

Passive internal

#### Electrical Crossover Slope:

12 dB/oct (2nd order) high & low pass

#### Impedance (Nominal):

8 ohms

#### Impedance (Minimum):

6.9 ohms

#### Input Connections:

Spring-loaded slide terminals

#### Enclosure Materials and Finish:

Black molded polypropylene cabinet with textured finish, black perforated metal speaker grille.

#### Mounting:

Flying via four threaded inserts compatible with Omnimount<sup>®</sup> Series 75 hardware (Omnimount not included)

#### Dimensions:

7½" W x 11½" H x 6½" D

#### Optional Accessories:

PR™-603 Stereo Subwoofer w/passive internal low frequency crossover with high pass left and right outputs for satellites.

#### Net Weight:

6 lbs.

**NOTE:** Tweeter is cooled with ferro fluid hi-fi voicing and clarity

#### FEATURES:

- Hi-fi sound character
- 5¼" special design woofer
- 1" Soft dome tweeter
- Moulded polypropylene cabinet
- Four threaded mounting points
- Weather resistant for outdoor use
- Drivers protected by a metal grille
- Small and lightweight with an unobtrusive appearance
- Frequency response: 70 Hz to 20 kHz
- SPL: 84 dB at 1W/1m

#### DESCRIPTION:

The PR™-603 is a mini two-way speaker system with a hi-fi sound character brought about via a driver complement consisting of a 1" dome tweeter and a special design 5¼" woofer. The unobtrusive and highly practical moulded trapezoidal cabinet is fitted with four threaded inserts, allowing com-

patibility with Omnimount® hardware (Series 75). With the unique interlocking slots on either side of the trapezoidal enclosure, arrays and multiple unit installations are simplified. These qualities combine to offer unmatched versatility for use in background music systems in bars, taverns, arenas, lounges, arcades or any where a multi-channel/multi-speaker sound system is required. Ideal for these venues, these high-impact polypropylene cabinets are nearly indestructible. A perforated metal grille protects the drivers from being tampered with by establishment clientele. Both the drivers and cabinet are weather resistant, facilitating outdoor use and installations. The performance extends from 70 Hz to 20 kHz in frequency response, while presenting an 8 ohm load at an efficiency of 84 dB at 1m with 1W input.

**DIRECTIVITY**

This specification serves as a reference to describe the coverage characteristics of an enclosure. Directivity parameters provide insight for proper speaker placement and installation in a chosen environment. As shown in Figure 4 the PR-603 exhibits a wide coverage over the entire frequency band.

**FREQUENCY RESPONSE**

The measurement is useful in determining how accurately a given enclosure reproduces an input signal. The frequency response of the PR-603 is measured at 1 meter using a 2.82 volt swept sine input. As shown in Figure 1, the selected drivers in the PR-603 combine to give a smooth frequency response from 70 Hz to 20,000 Hz.

**POWER HANDLING**

There are many different approaches to power handling ratings, the most common being EIA standard RS-426A. The derived shape of this test spectrum was an attempt to simulate the spectral content of contemporary music. Although it does resemble contemporary music, EIA-RS-426A does not contain the same levels of very low frequency material found in live music situations. Very high levels of low frequency material produce distortion and, ultimately, device failure. The presence of the low frequency material will therefore yield lower device ratings than produced by EIA standard RS-426A.

Although the Peavey ratings are lower than those produced by the EIA test spectrum, they are far more reliable and will have a direct correlation to real world situations.

**MOUNTING**

Omnimount 75, interlock to form array. No more than three PR-603 units should be suspended from a single Omnimount 75 mounting system.

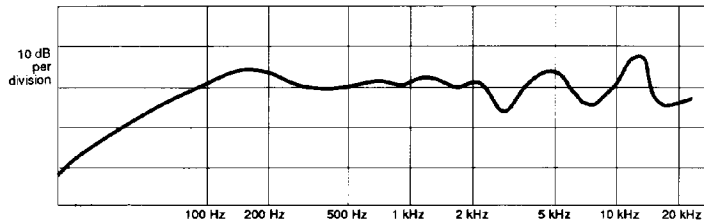


Figure 1. FREQUENCY RESPONSE

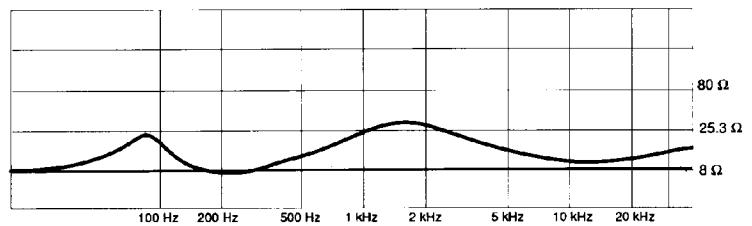


Figure 2. IMPEDANCE

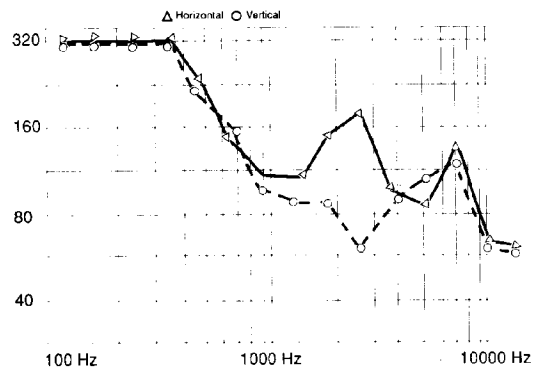


Figure 3. BEAMWIDTH VS. FREQUENCY

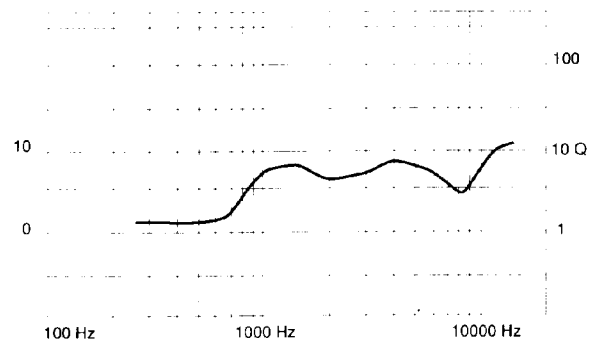
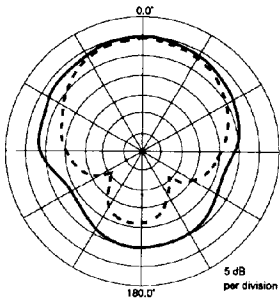
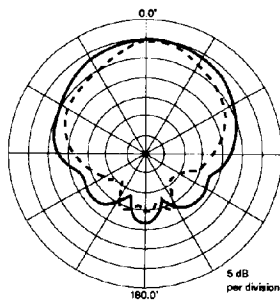


Figure 4. DIRECTIVITY

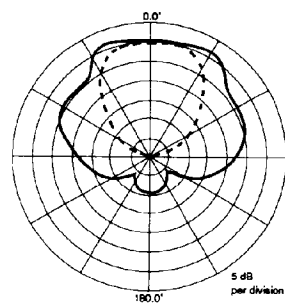
### HORIZONTAL



— 500 Hz  
- - - 1 kHz

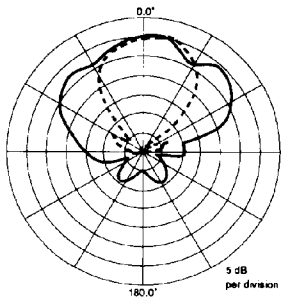
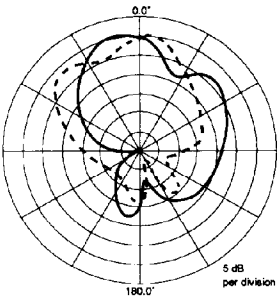
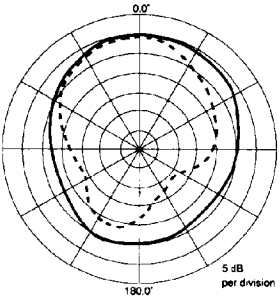


— 2 kHz  
- - - 4 kHz



— 8 kHz  
- - - 16 kHz

### VERTICAL



**ARCHITECTURAL AND  
ENGINEERING SPECIFICATIONS**

The loudspeakers system shall have an operating bandwidth of 70 Hz to 20 kHz. The output level shall be 84 dB when measured at a distance of one meter with an input of one watt. The nominal impedance shall be 8 ohms. The continuous power handling shall be 30 watts, maximum program power of 60 watts, with a minimum amplifier headroom of 3 dB. The outside dimensions shall be 7½"W x 11½"H x 6½"D. The weight shall be 6 lbs. The loudspeaker system shall be a Peavey Architectural Acoustic Division model PR™-603.

**LIMITED WARRANTY**

Peavey Electronics Corporation warrants to the original purchaser of this new Architectural Acoustics® product that it is free from defects in material and workmanship. If within one (1) year from date of purchase a properly installed product proves to be defective and Peavey is notified, Peavey will repair or replace it at no charge. (Note: Batteries and patch cords not covered.) "Original purchaser" means the customer for whom the product is originally installed.

Damage resulting from improper installation, interconnection of a unit or system of another manufacturer, accident or unreasonable use, neglect or any other cause not arising from defects in material and workmanship is not covered by this warranty. The warranty is valid only as to products purchased and installed in the United States.

**THIS LIMITED WARRANTY IS IN LIEU OF ANY AND ALL WARRANTIES, EXPRESSED OR IMPLIED, INCLUDING THE IMPLIED WARRANTIES OF MERCHANTABILITY AND FITNESS FOR A PARTICULAR USE. UNDER NO CIRCUMSTANCES WILL PEAVEY BE LIABLE FOR ANY LOST PROFITS, LOST SAVINGS, INCIDENTAL DAMAGES OR CONSEQUENTIAL DAMAGES ARISING OUT OF THE USE OR INABILITY TO USE THE PRODUCT, EVEN IF PEAVEY HAS BEEN ADVISED OF THE POSSIBILITY OF SUCH DAMAGE. THIS LIMITED WARRANTY IS THE ONLY EXPRESSED WARRANTY**

**ON THIS PRODUCT, AND NO OTHER STATEMENT, REPRESENTATION, WARRANTY, OR AGREEMENT BY ANY PERSON SHALL BE VALID OR BINDING UPON PEAVEY.**

Peavey's liability to the original purchaser for damages for any cause whatsoever and regardless of the form of action, is limited to the actual damages up to the greater of Five Hundred Dollars (\$500) or an amount equal to the purchase price of the product that caused the damage or that is the subject of or is directly related to the cause of action. This limitation of liability will not apply to claims for personal injury or damage to real property or tangible personal property allegedly caused by Peavey's negligence. For information on service under this warranty, call a Peavey customer service representative at (601) 483-5376.



Omnimount® is a registered trademark of Omnimount Systems, Inc.  
Features and specifications subject to change without notice.

A Division of Peavey Electronics Corporation

711 A Street, P. O. Box 2898, Meridian, MS 39302-2898 / (601) 483-5376 / Telex: 504115 / Fax: (601) 484-4278  
#80301364