

**PEAVEY**<sup>®</sup>  
ARCHITECTURAL ACOUSTICS<sup>®</sup>

# IPA<sup>™</sup> 150T

## High Performance Utility Amplifier

### SPECIFICATIONS

#### SPECIFICATIONS:

##### Rated Power and Load:

Direct Output: 150W RMS @ 4 ohms  
Transformer Output (Fully Isolated)  
150W RMS @ 4 ohms (25V)/32 ohms  
(70V)

##### Distortion:

0.5% THD @ rated power

##### Frequency Response:

Direct Output: +0/-1 dB  
40 Hz - 20 kHz

##### Hum and Noise:

Greater than 95 dB below rated  
power

##### Input Sensitivity:

0.87V RMS

##### Subsonic Filter:

Provides an 18 dB per octave roll-off  
of low frequencies with the -3 dB  
point @ 42 Hz

#### FEATURES:

##### Power Output:

150W RMS into 4 ohms

##### Controls and Indicators:

Level control  
Subsonic filter switch  
Power on LED  
Power switch

##### Outputs:

4 ohm screw terminal direct output  
25 volt balanced output  
8 ohm balanced output  
1V/600 ohm balanced output  
70V balanced output  
AC convenience outlet

##### Package:

Painted shelf top metal chassis

#### DESCRIPTION:

The IPA<sup>™</sup> 150T is a high performance power amplifier designed to meet the needs of the most demanding fixed installation/PA application. The convenient patch panel layout coupled with state of the art circuit design, assures reliable long term operation and smooth trouble-free installation.

Twenty-five and seventy volt fully isolated line output capability is standard equipment. The IPA 150T has been packaged for standard 19" "rack-mount" capability with optional rack-mount kit and occupies only 3 1/2" of vertical rack space.

## ARCHITECTURAL AND ENGINEERING SPECIFICATIONS

The power amplifier shall have one input that has provisions for both balanced and unbalanced signals. Connections for the balanced input shall be provided via a (RTS) ¼" jack or by barrier strip connections. Connections for the unbalanced input shall be provided by the (RTS) ¼" jack, the barrier strip connections, and the RCA phono jack. Provision for an external master volume control shall be made via barrier strip connections on the back panel. The unit shall be packaged in a rugged metal chassis 17" wide by 3½" high by 15¾" deep (including external heatsinks). Weight is 37 lbs. The unit shall operate from standard 120 volts AC, 60 Hz power. The power amplifier shall be capable of delivering 150 watts into 4 ohms and 8 ohms, as well as providing 25 volt and 70 volt line outputs. The unit shall be capable of delivering rated power from 40 Hz to 20 kHz, +0/-1 dB into 4 ohms at its direct output at 0.5% or less distortion with system hum and noise at least 95 dB below rated output. The unit shall be called the Peavey Architectural Acoustics Division model IPA 150T.

## LIMITED WARRANTY

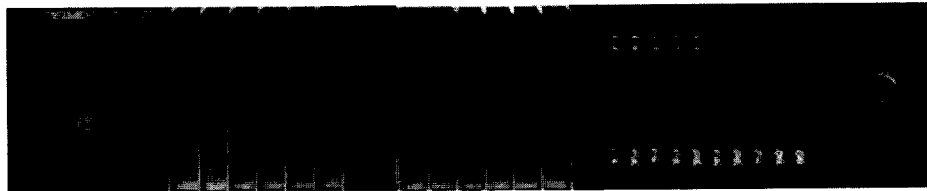
Peavey Electronics Corporation warrants to the original purchaser of this new Architectural Acoustics product that it is free from defects in material and workmanship. If within one (1) year from date of purchase a properly installed product proves to be defective and Peavey is notified, Peavey will repair or replace it at no charge. (Note: Batteries and patch cords not covered.) "Original purchaser" means the customer for whom the product is originally installed.

Damage resulting from improper installation, interconnection of a unit or system of another manufacturer, accident or unreasonable use, neglect or any other cause not arising from defects in material and workmanship is not covered by this warranty. The warranty is valid only as to products purchased and installed in the United States.

**THIS LIMITED WARRANTY IS IN LIEU OF ANY AND ALL WARRANTIES, EXPRESSED OR IMPLIED, INCLUDING THE IMPLIED WARRANTIES OF MERCHANTABILITY AND FITNESS FOR A PARTICULAR USE. UNDER NO CIRCUMSTANCES WILL PEAVEY BE LIABLE FOR ANY LOST PROFITS, LOST SAVINGS, INCIDENTAL DAMAGES OR CONSEQUEN-**

**TIAL DAMAGES ARISING OUT OF THE USE OR INABILITY TO USE THE PRODUCT, EVEN IF PEAVEY HAS BEEN ADVISED OF THE POSSIBILITY OF SUCH DAMAGE. THIS LIMITED WARRANTY IS THE ONLY EXPRESSED WARRANTY ON THIS PRODUCT, AND NO OTHER STATEMENT, REPRESENTATION, WARRANTY, OR AGREEMENT BY ANY PERSON SHALL BE VALID OR BINDING UPON PEAVEY.**

Peavey's liability to the original purchaser for damages for any cause whatsoever and regardless of the form of action, is limited to the actual damages up to the greater of Five Hundred Dollars (\$500) or an amount equal to the purchase price of the product that caused the damage or that is the subject of or is directly related to the cause of action. This limitation of liability will not apply to claims for personal injury or damage to real property or tangible personal property allegedly caused by Peavey's negligence. For information on service under this warranty, call a Peavey customer service representative at (601) 483-5376.



**PEAVEY**<sup>®</sup>  
ARCHITECTURAL ACOUSTICS<sup>®</sup>

Features and specifications subject to change without notice.

Peavey Electronics Corporation 711 A Street / Meridian, MS 39302-2898 / U.S.A. / (601)483-5376 / Telex 504115 / Fax 486-1278

©1991

#80301523

Printed in U.S.A. 7/91