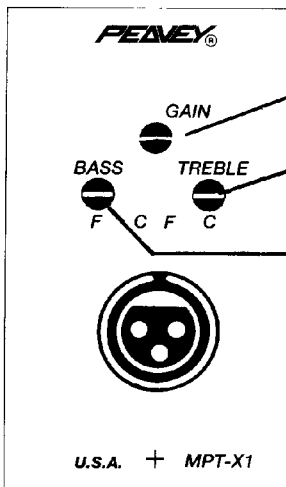




# MA™ SERIES MODULE MPT™-X1

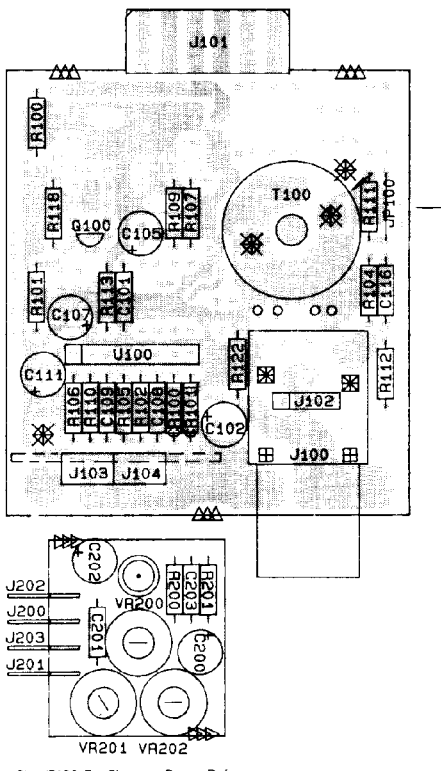
## Transformer Balanced Input Module With XLR And EQ



- Input sensitivity control. Controls input gain of the module.
- Treble Cut: Provides 6 dB/octave cut at or above 4.2 kHz
- Bass cut: Provides 6 dB/octave cut at or below 330 Hz
- XLR input panel, providing transformer balanced input. Pin #3 is positive; pin #2 is negative; and pin #1 is ground.

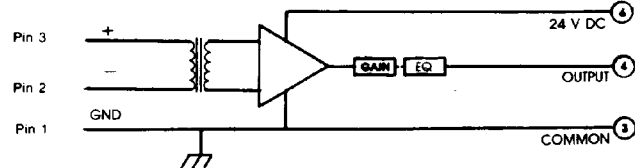
### INSTALLATION:

The module installs at the rear panel of product accepting the standard 6-pin card-edge connection. Align card-edge connector with top and bottom circuit board guides. Snap module into card-edge socket, push flush with rear panel, and install (furnished) mounting screws.



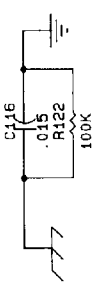
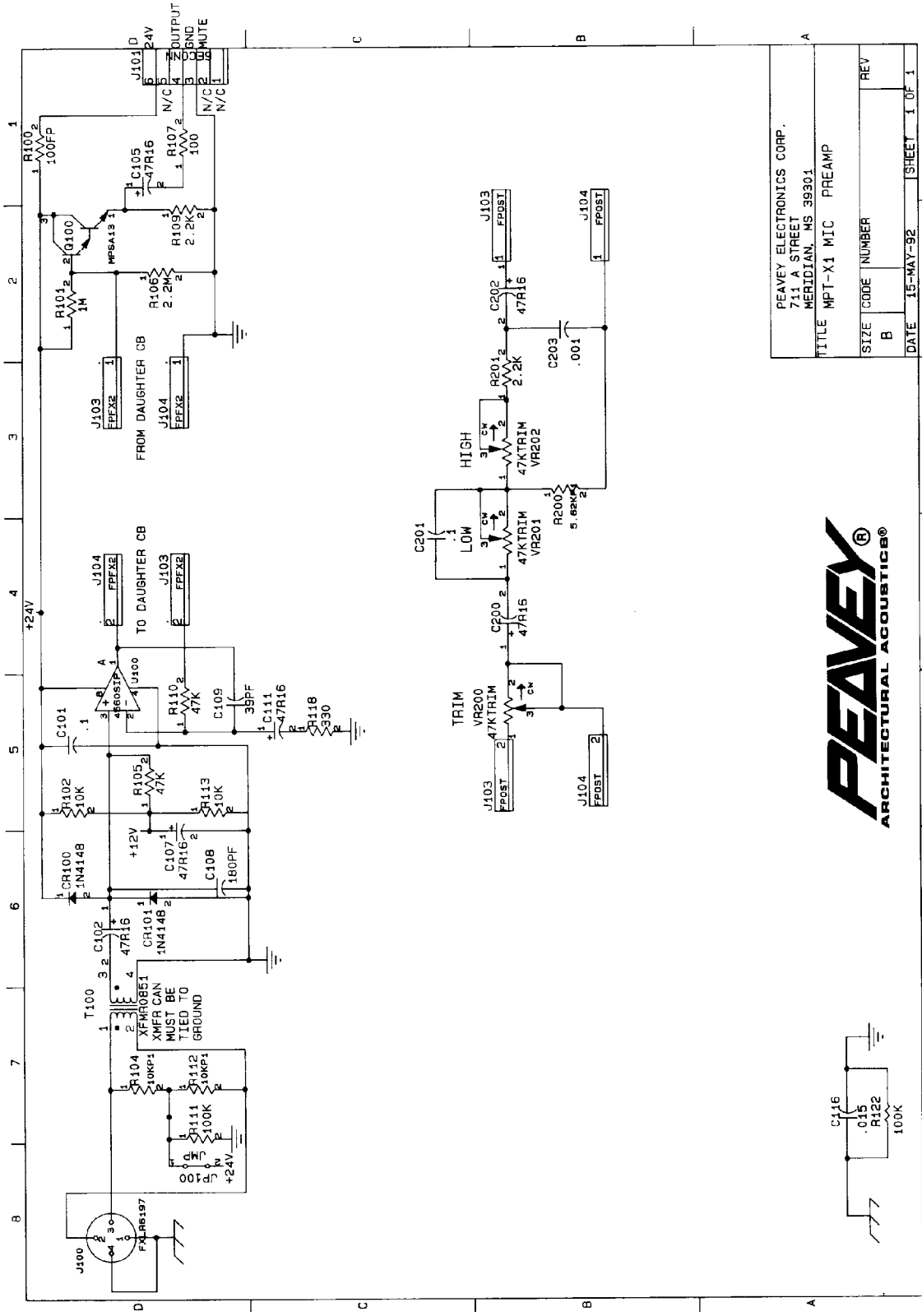
Clip JP100 For Phantom Power Defeat

### BLOCK DIAGRAM



### SPECIFICATIONS:

- Gain:** 32 - 52 dB
- Input Sensitivity:** .25 mV - 2.5 mV
- Frequency Response:** ±1 dB 25 Hz to 20 kHz
- Input Impedance:** 200 ohms
- Noise:** -125 dBm (200 ohms terminated)
- Bass:** Flat to 6 dB per octave below 330 Hz
- Treble:** Flat to 6 dB per octave above 4.2 kHz
- Phantom Power:** 24 V DC
- Power:** +24 V DC
- Controls:** Gain, Low Cut, High Out
- Mounting:** Edge card connector
- Weight:** 3.7 oz.
- Dimensions:** 3.07" H × 1.38" W × 3.46" D
- Load Impedance:** 10K ohms



PEAVEY ELECTRONICS CORP. 711 A STREET MERIDIAN, MS 39301	
TITLE	MPT-X1 MIC PREAMP
SIZE	CODE NUMBER
B	REV
DATE	15-MAY-92
SHEET	1 OF 1

Features and specifications subject to change without notice.

A Division of Peavey Electronics Corporation  
 711 A Street, P. O. Box 2898, Meridian, MS 39302-2898 / (601) 483-5376 / Fax: (601) 486-1278  
 #80301691

© 1993

Printed in U.S.A. 8/93