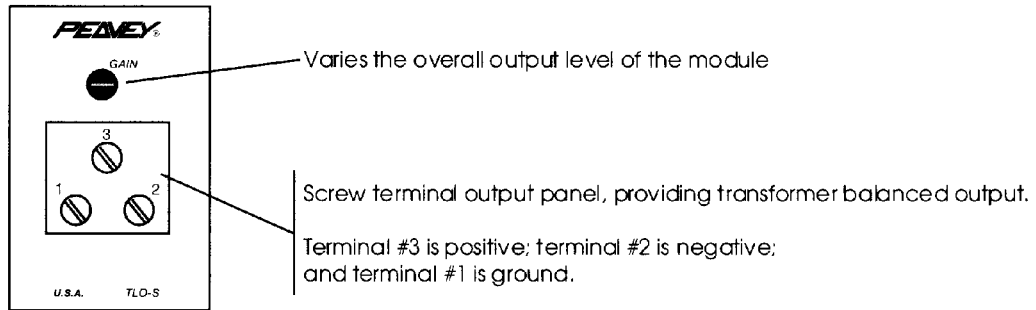


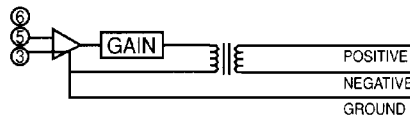
# MA™ SERIES MODULE TLO™-S

Transformer balanced output module with screw terminal

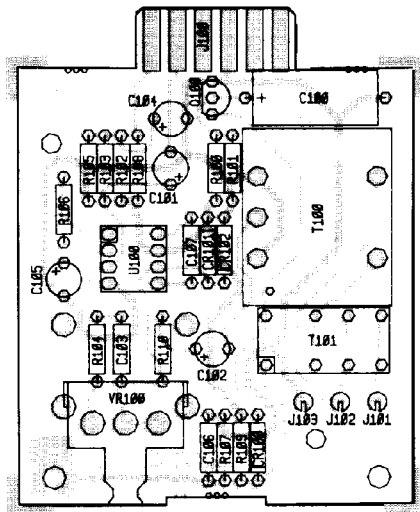


## INSTALLATION:

The module installs at the rear panel of products accepting the standard 6-pin card-edge module connection. Align card-edge connector with top and bottom circuit board guides. Snap module into card-edge socket, push flush with rear panel, and install (furnished) mounting screws.

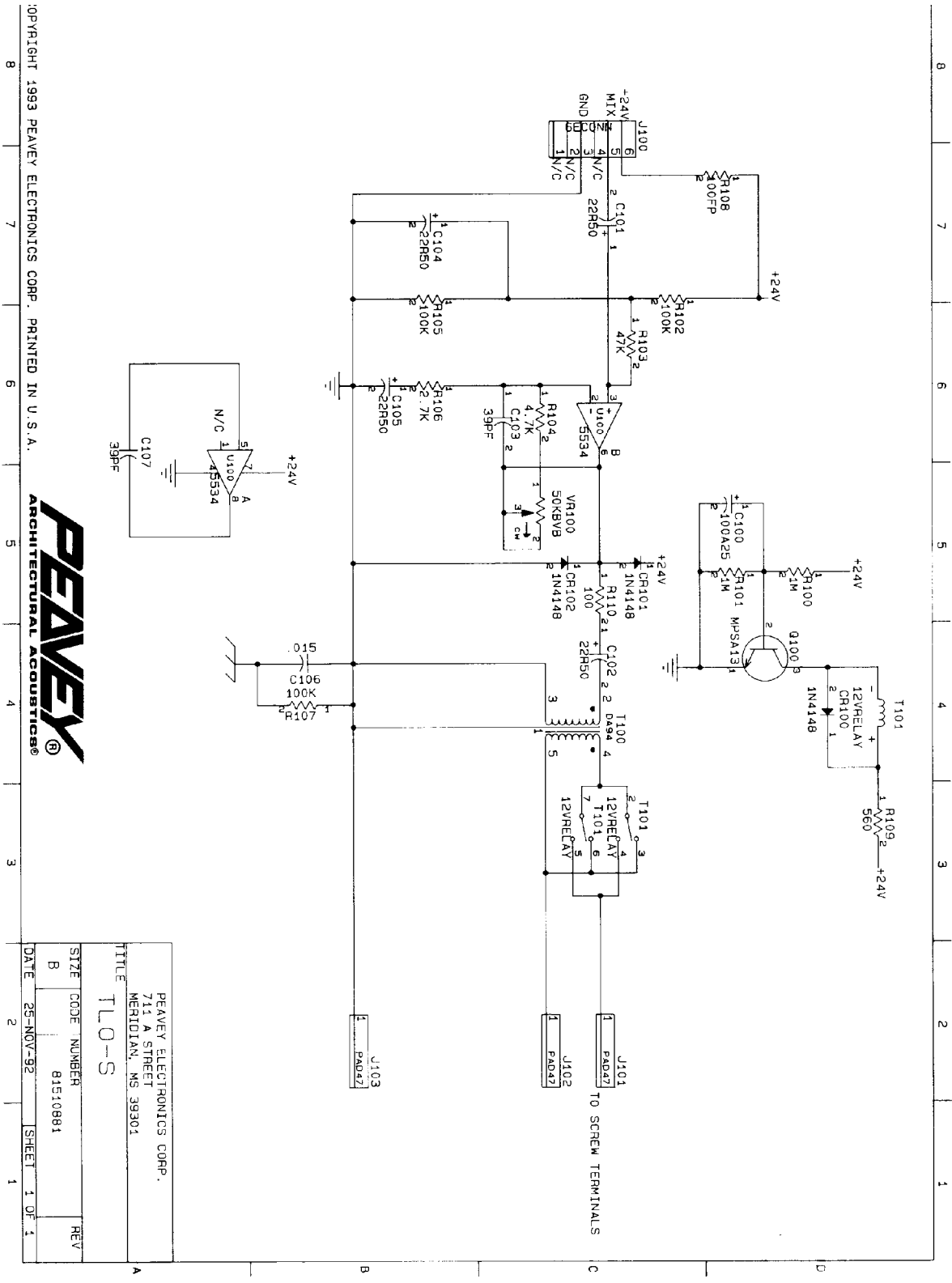


## BLOCK DIAGRAM



## SPECIFICATIONS:

**Frequency Response:** 20 Hz to 20 kHz  $\pm$ 4 dB  
**Signal-to-Noise Ratio:** 80 dB  
**Source Impedance:** 600 ohms, transformer balanced  
**Mounting:** Edge card connector  
**Weight:** 4 oz.  
**Dimensions:** 3.07" H x 1.38" W x 3.46" D



PEAVEY ARCHITECTURAL ACOUSTICS®



PEAVEY ELECTRONICS CORP. 711 A STREET MERIDIAN, MS 39301	
TITLE	TLO-S
SIZE	CODE NUMBER
B	81510881
DATE	25-NOV-92
	SHEET 1 OF 1

Features and specifications subject to change without notice.

©1993 A Division of Peavey Electronics Corporation  
711 A Street, P. O. Box 2898, Meridian, MS 39302-2898 / (601) 483-5376 / Telex: 504115 / Fax: (601) 484-4278  
#80301933 Printed in U.S.A. 4/93