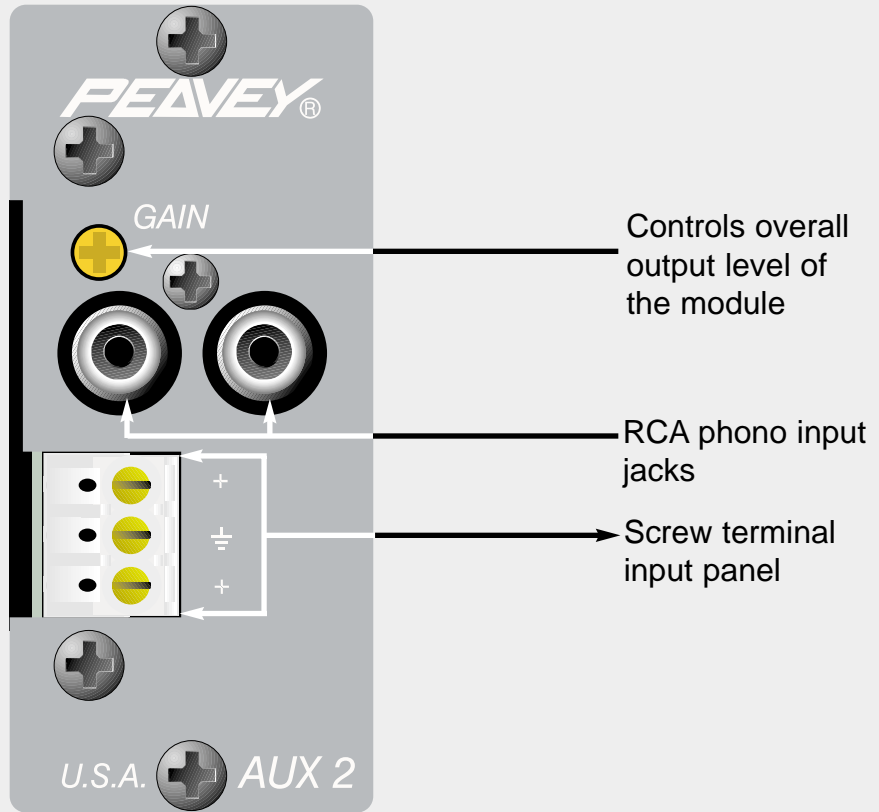


S P E C I F I C A T I O N S



MMA™ SERIES MODULE AUX™ 2

Auxiliary Preamp Input
Module With Muting

SPECIFICATIONS

INSTALLATION:

The module installs at the rear panel of products accepting the standard 6-pin card-edge module connection. Align card-edge connector with top and bottom circuit board guides. Snap module into card-edge socket, push flush with rear panel and install (furnished) mounting screws.

Gain: 0 to -60 dB

Input Sensitivity: 100 mV to 6.3 V
(-17.8 dBu to 14 dBu)

Frequency Response:
20 Hz to 20 kHz ± 0.5 dB

S/N Ratio: 90 dB

Muting Level: 60 dB

Power: +24 V DC

Control: Gain

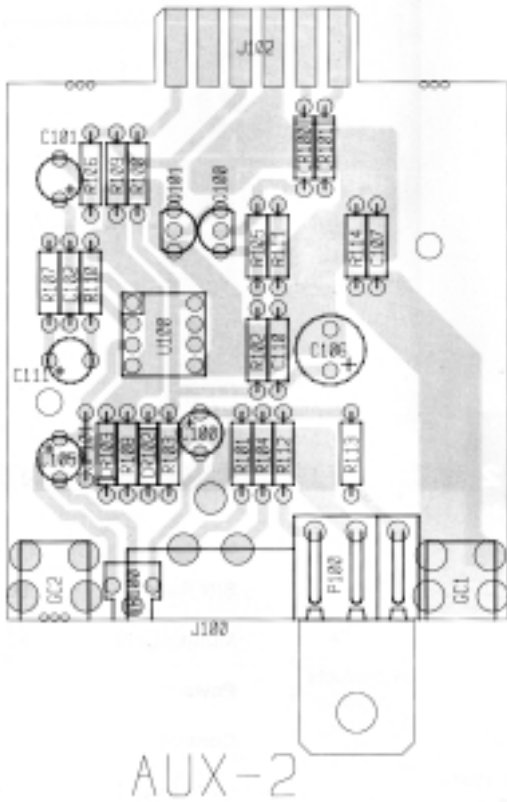
Mounting: Edge card connector

Weight: 2.5 oz

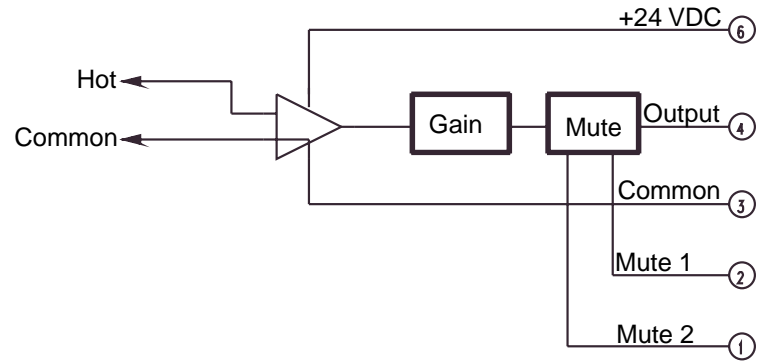
Dimensions: 3.07" H x 1.38" W x 3.70" D

Load Impedance: 10k ohm

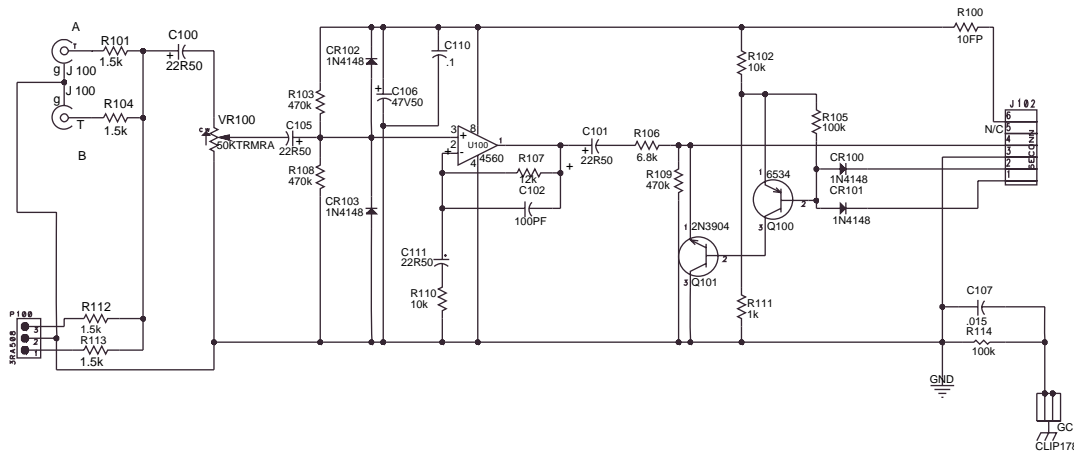
AUX™-2 BOARD LAYOUT



AUX™ 2 BLOCK DIAGRAM



AUX™ 2 SCHEMATIC



To defeat Mute 1 slave operation, remove CR 100
 To defeat Mute 2 slave operation, remove CR 101

2 + 3 YEAR LIMITED WARRANTY

NOTE: For details, refer to the warranty statement. Copies of this statement may be obtained by contacting Peavey Electronic Corporation, P.O. Box 2898, Meridian, Mississippi 39302-2898.



Features and specifications subject to change without notice.

Peavey Electronics Corporation • 711 A Street • Meridian • MS • 39301
 (601) 483-5376 • FAX (601) 486-1678 • www.peavey.com



80304511