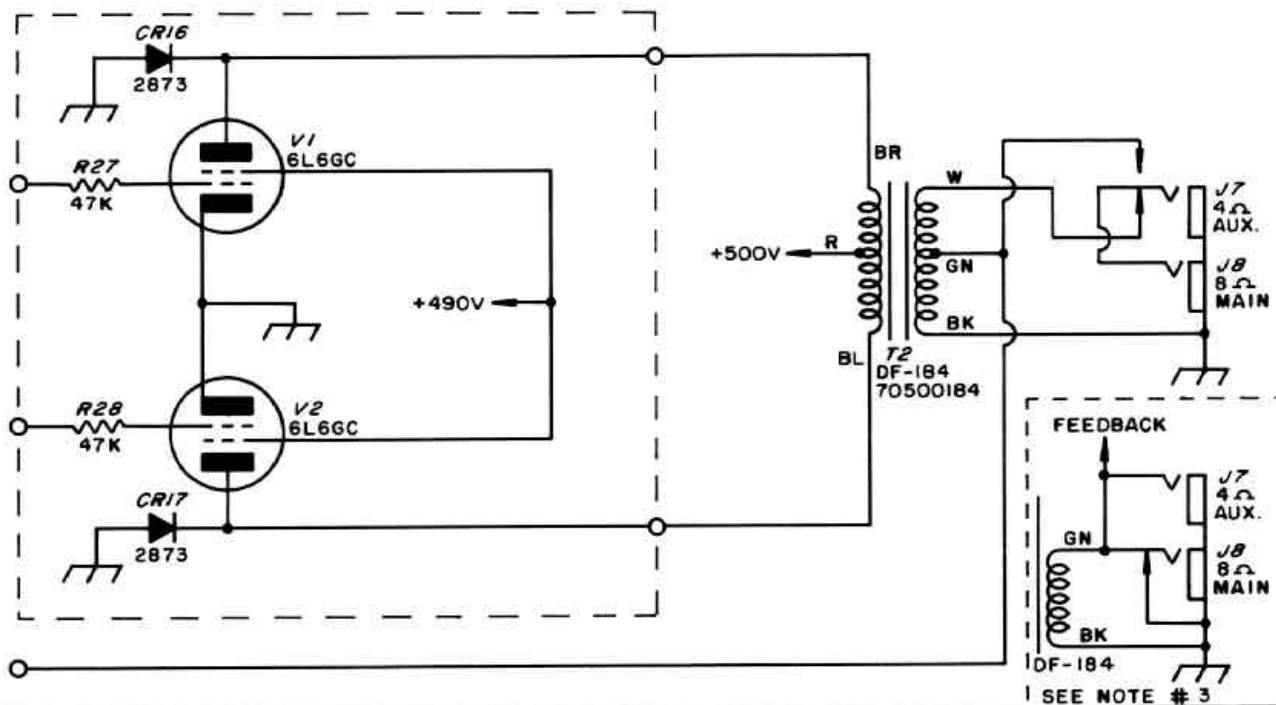
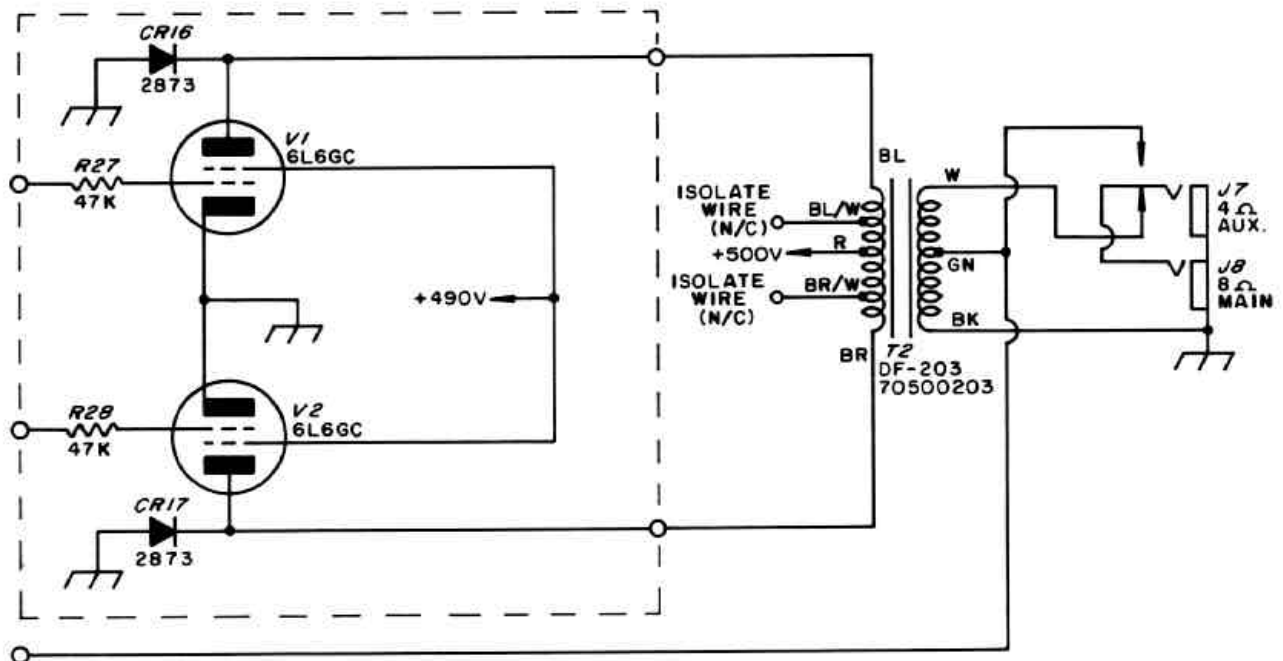


'CLASSIC' WITH DF-184 INSTALLED



'CLASSIC' WITH DF-203 INSTALLED



- NOTES:
1. THE BLUE/WHITE WIRE AND THE BROWN/WHITE WIRE COMING OUT OF THE DF-203 MUST BE ISOLATED SO THAT THEY MAKE NO CONNECTION.
 2. THE BROWN AND THE BLUE WIRES COMING OUT OF THE DF-203 ARE CONNECTED IN REVERSE POSITION FROM THE ORIGINAL DF-184 TRANSFORMER.
 3. SOME EARLY MODEL 'CLASSIC' AMPS DID NOT HAVE A WHITE WIRE COMING FROM THE DF-184 TRANSFORMER. IN SUCH CASES, ISOLATE THE WHITE WIRE OF THE DF-203 SO THAT IT MAKES NO CONNECTION. (SEE INSET)
 4. IN MOST CASES, THE CHASSIS MUST BE RE-DRILLED FOR MOUNTING THE DF-203 DUE TO DIFFERENT MOUNT PATTERN.

CLASSIC TRANSFORMER WIRING DIAGRAM

PEAVEY ELECTRONICS CORP.
MERIDIAN, MS.