



**INNOVATION AMPLIFIED**



## PRODUCT CATALOG

<b>DIGITAL MIXERS</b>	<b>2</b>	<b>AUREUS™ 28 DIGITAL MIXER</b>	<b>GUITAR AMPLIFIERS &amp; CABS</b>	<b>50</b>	<b>6505® SERIES</b>
				<b>60</b>	<b>INVECTIVE™ SERIES</b>
				<b>66</b>	<b>CLASSIC® SERIES</b>
				<b>72</b>	<b>VYPYR® SERIES</b>
				<b>78</b>	<b>GUITAR AMPS</b>
<b>NON-POWERED MIXERS</b>	<b>6</b>	<b>PV® SERIES</b>	<b>GUITARS</b>	<b>80</b>	<b>HP 2® SERIES</b>
<b>POWERED MIXERS</b>	<b>10</b>	<b>XR®S</b>		<b>86</b>	<b>RAPTOR® SERIES</b>
	<b>11</b>	<b>XR®AT</b>			
<b>PORTABLE P.A.</b>	<b>12</b>	<b>LN™ 1263 COLUMN ARRAY</b>	<b>ACOUSTIC GUITARS</b>	<b>88</b>	<b>DELTA WOODS™ SERIES</b>
	<b>14</b>	<b>LN™ 1063 COLUMN ARRAY</b>		<b>100</b>	<b>DELTA WOODS™ UKULELES</b>
	<b>16</b>	<b>P® SERIES</b>			
	<b>18</b>	<b>ESCORT® SYSTEM</b>			
<b>NON-POWERED ENCLOSURES</b>	<b>20</b>	<b>IMPULSE® SERIES</b>	<b>KEYBOARD AMPLIFIERS</b>	<b>102</b>	<b>KB® SERIES</b>
	<b>22</b>	<b>SP® SERIES</b>	<b>BASS AMPLIFIERS &amp; CABS</b>	<b>104</b>	<b>MINIMEGA™</b>
	<b>24</b>	<b>PVX™ SERIES</b>		<b>105</b>	<b>MINIMAX™</b>
	<b>26</b>	<b>PV® SERIES</b>		<b>106</b>	<b>MAX® SERIES</b>
	<b>28</b>	<b>PVi® SERIES</b>		<b>112</b>	<b>TNT® AND TKO®</b>
<b>POWERED ENCLOSURES</b>	<b>30</b>	<b>PVX™p SERIES</b>	<b>BASSES</b>	<b>114</b>	<b>MILESTONE® SERIES</b>
	<b>32</b>	<b>PVs® SERIES</b>			
<b>SPEAKER MOUNTS</b>	<b>34</b>	<b>VM® SERIES MOUNTING SYSTEM</b>	<b>TRACE ELLIOT®</b>	<b>116</b>	<b>PRO SERIES</b>
				<b>126</b>	<b>ELF™</b>
<b>POWER AMPS</b>	<b>36</b>	<b>IPR™2 AMPS</b>		<b>130</b>	<b>TRANSIT™</b>
	<b>37</b>	<b>ISPD™ PRO</b>			
	<b>38</b>	<b>CS® SERIES</b>			
<b>CREST AUDIO®</b>	<b>40</b>	<b>VERSARRAY™ SERIES</b>			
	<b>44</b>	<b>TACTUS™ DIGITAL MIXING SYSTEM</b>			

FLOYD ROSE® is a registered trademark of Floyd Rose Marketing, Inc.  
HIPSHOT™ is a trademark of Hipshot Music Products  
NEUTRIK® is a registered trademark of Neutrik AG.  
GROVER® is a registered trademark of Grover Musical Products, Inc.  
ACCUTRONICS® is a registered trademark of Sound Enhancements, Inc.  
GRAPH TECH™ is a trademark of Graph Tech Guitar Labs  
SWITCHCRAFT® is a registered trademark of Switchcraft, Inc.  
SCHALLER® is a registered trademark of Schaller Electronic.  
iPhone®, iPod®, iPod touch®, iPad®, OS X® & Mac® are registered trademarks of Apple Inc.  
Core Audio is a trademark of Apple Inc.

MaxxBass® is a registered trademark of Waves Audio Ltd.  
Antares® and Auto-Tune® are registered trademarks of Antares Audio Technologies  
Solid-Tune™ is a trademark of Antares Audio Technologies  
Kevlar® is a registered trademark of DuPont  
EASE is a trademark of AFMG Technologies GmbH  
Windows® and Vista® are registered trademarks of Microsoft Corporation  
ASIO is a trademark of Steinberg Media Technologies GmbH  
5150® is a registered trademark of E.L.V.H. Inc. All rights reserved.

All other trademarks are the property of their respective owners.

This Product Catalog is a publication of Peavey Electronics Corporation. Specifications and features subject to change without notice. Some of the products featured in this publication may not be available at certain Peavey dealers. The contents of this publication are ©2022 by Peavey and may not be reproduced in any manner without prior written permission of Peavey. All rights reserved.



ATES  
WS



CITY OF MERIDIAN



VISIT  
MISSISSIPPI



WTOK-TV



MERIDIAN  
COUNCIL FOR THE ARTS

DIGITAL MIXER

# AUREUS™ 28 DIGITAL MIXER



MEET THE  
AUREUS™ DIGITAL MIXER

# AUREUS™ DIGITAL MIXER

## Every channel – every feature is one touch away with the Aureus™ 28-channel Digital Mixer

The foundation of the Peavey Aureus digital mixer is professional quality audio in an easy to use package. The 10 inch multi-touch display allows users to access almost any control with just a couple of taps. Fifty-nine dedicated controls allow access to most critical functions with a single touch, making the Aureus the easiest to use digital mixer to date. No fumbling through endless menus – just touch the feature you want to access and adjust.

Quick setup is easy with the Aureus. Packed with presets for channels, EQ, gate, compressor, scenes, and shows, the mix can be up and running in minutes. The mixer also provides the ability to save and store your own presets, scenes, and even an entire mix onto a USB drive.



Connect up to 10 remote devices over integrated WIFI and give artists personal control over their mixes

DIGITAL MIXER

# AUREUS™ 28 DIGITAL MIXER

Sixteen studio-grade mic preamps with XLR and 1/4-inch combination jacks

14 dedicated encoders control nearly every parameter, including EQ, dynamics, and 23 built-in effects

45 bright backlit buttons are easy to see in a dark sound booth

Nine high-quality 100mm motorized faders

Connect a tablet as a second screen and mount it safely to the onboard dock

One-touch metering



# AUREUS™ DIGITAL MIXER

The 10" multi-touch display allows users to access almost any control with just a couple of taps.

Make precise adjustments with the large high-resolution parameter knob

Main and per-channel select, solo, and mute controls

## Easy to use, yet powerful

The Aureus is the easiest to use digital mixer to date. No fumbling through endless menus – just touch the feature you want to access and adjust.

03619200

- Channels: 28 inputs X 14 outputs
- Inputs: 16 x XLR-1/4" Combo
- Phantom Power: 16 Channels 48V
- Additional Inputs: USB A/B,  **Bluetooth®**
- Outputs: 10 X XLR, 2 RCA, 6 Digital
- AUX Sends: 8 Aux
- Busses / Groups: 8 BUS, 2 MAIN, 4 DCA
- DATA I/O: WIFI onboard, Ethernet remote
- Computer Connectivity: Ethernet, WIFI, USB
- Headphones: 1 X 1/4"
- Faders: 9 100mm Motorized
- EQ: 5-band fully parametric
- Effects: 23 effects in 2 engines
- Rack Mountable: Yes
- Mute Groups: 3 programmable
- Mute Functions: 6 Dedicated controls
- Bluetooth: Stereo - Long Range
- Solo Function: With dedicated controls
- Tablet Holder: Yes



Equipped with 28 inputs and 14 inputs, with USB, Ethernet, AES digital, RCA inputs and outputs, and Bluetooth connectivity

LEARN MORE AT [PEAVEY.COM/AUREUS](http://PEAVEY.COM/AUREUS) ►

# PV<sup>®</sup> SERIES MIXERS

## PV<sup>®</sup> 14 AT

The PV<sup>®</sup> 14 AT offers 14 flexible channels in a compact design. Important upgrades like Antares<sup>®</sup> Auto-Tune, long range Bluetooth connectivity, and a plethora of controls to dial-in your sound makes the PV 14 AT the perfect 14 channel mixer.

03612630



## EQUIPPED WITH Antares<sup>®</sup> Auto-Tune<sup>®</sup>

The PV<sup>®</sup> AT mixers come equipped with Antares<sup>®</sup> Auto-Tune<sup>®</sup> pitch correction, a technology that can help anyone sing in key. Auto-tune is now a standard in large-scale music production, with the PV AT mixer collection this important enhancement is now available and easy to use for everyone. Control the Auto-Tune setting from an extreme effect to a subtle adjustment to make a good singer a great singer.

Convenient phone & tablet cradle



Slim, low-profile design

- 4 Channels of Antares<sup>®</sup> Auto-Tune
- 8 channels of Peavey's exclusive MidMorph<sup>®</sup> EQ
- Hi pass filters on first 8 channels remove unwanted rumble and noise
- KOSMOS<sup>®</sup> bass and treble enhancement
- 8 combination XLR/1/4" low noise mic preamps
- Equipped with long range Bluetooth wireless connectivity
- Built-in Digital Effects with LCD Display
- On-board USB-A MP3 and WAV playback
- Stereo USB-B streaming audio in and out, 16-bit, up to 48kHz sample rates

## PV<sup>®</sup> SERIES AT & BT MIXERS FEATURE:

**KOSMOS<sup>®</sup>**  
The Kosmos<sup>®</sup> is a low frequency energy and stereo image enhancement system.

## PV<sup>®</sup> 10 AT

The PV<sup>®</sup> 10 AT is a compact and versatile mixer that is perfect for live sound or desktop recording applications. It is small in size, but big on features.

03612610



2 channels of  
Antares<sup>®</sup> Auto-Tune

4 channels of Peavey's  
exclusive MidMorph<sup>®</sup> EQ

Hi pass filters on first 4 channels  
remove unwanted rumble and noise

KOSMOS<sup>®</sup> bass and treble enhancement

Equipped with long range Bluetooth  
wireless connectivity

On-board Hi Z guitar input with amp  
simulation, a Peavey exclusive

Built-in Digital Effects with LCD Display

USB-B in and out directly  
connects to your computer



A Bluetooth<sup>®</sup> audio link allows seamless connection to almost any "smart" device. The upgraded long range Bluetooth provides extended reach.



Reference-quality mic preamps that spec in at an incredible 0.0007% THD, making the PV series mixers excellent for live or recording applications.

# PV<sup>®</sup> SERIES MIXERS

## PV<sup>®</sup> 14 BT

The PV<sup>®</sup> 14 BT is packed with powerful features allowing you to sound great live or when recording. Equipped with Kosmos<sup>®</sup>, Silencer™ mic preamps, MidMorph<sup>®</sup> and more. Connectivity is perfected with both USB and Bluetooth options.

03614200



8 channels of Peavey's exclusive MidMorph<sup>®</sup> EQ

Hi pass filters on first 8 channels remove unwanted rumble and noise

Equipped with long range Bluetooth wireless connectivity

KOSMOS<sup>®</sup> bass and treble enhancement

8 combination XLR/1/4" low noise mic preamps

Built-in Digital Effects with LCD Display

On-board USB-A MP3 and WAV playback

Stereo USB-B streaming audio in and out, 16-bit, up to 48kHz sample rates



## PV<sup>®</sup> series Mixers are PERFECT for:



RECORDING



PODCASTING



VIDEO PRODUCTION

Integrated USB In/Out makes recording versatile and easy. Stream audio in from your device or computer using USB-in, then use USB-out to get that perfectly mixed audio output where you need it.

## PV<sup>®</sup> SERIES AT & BT MIXERS FEATURE:

### KOSMOS<sup>®</sup>

The Kosmos<sup>®</sup> is a low frequency energy and stereo image enhancement system.

## PV® 10 BT

The PV® 10 BT includes 4 channels of reference quality mic preamps, 4 direct outputs for recording, a stereo channel, media channel with Bluetooth® wireless input, high quality digital effects and much, much more.

03612790



4 channels of Peavey's exclusive MidMorph® EQ

Hi pass filters on first 4 channels remove unwanted rumble and noise

KOSMOS® bass and treble enhancement

Built-in Digital Effects with LCD Display

Equipped with long range Bluetooth wireless connectivity

On-board Hi Z guitar input with amp simulation, a Peavey exclusive

USB-B in and out directly connects to your computer



## GUITAR CHANNEL

The built-in guitar channel on all PV Series mixers not only changes impedance, but the EQ and channel is fully optimized for guitar, just press of a button to switch to access the integrated guitar preamp. Great for acoustic or electric guitar.

## PV® 6 BT

Six feature packed channels makes the PV® 6 BT the perfect mixer for many live and recording applications. Just the right inputs, outputs and sound enhancing capabilities.

03612590

2 combination XLR/1/4" low noise mic preamps

2 channels of Peavey's exclusive MidMorph® EQ

Equipped with long range Bluetooth wireless connectivity

On-board Hi Z guitar input with amp simulation, a Peavey exclusive

USB-B in and out directly connects to your computer

3-band EQ on all channels



A Bluetooth® audio link allows seamless connection to almost any "smart" device. The upgraded long range Bluetooth provides extended reach.



Reference-quality mic preamps that spec in at an incredible 0.0007% THD, making the PV series mixers excellent for live or recording applications.

# XR<sup>®</sup>S POWERED MIXER

## XR<sup>®</sup>S Powered Mixer

The XR<sup>®</sup>S powered mixer incorporates an 8-channel mixer and 1,000 Watts of power (1,500 Watts peak) into a feature-rich, conveniently sized package. This highly portable mixer is ideal for use in small to medium sized venues.



03612230

The XR<sup>®</sup>S comes equipped with on-board digital effects and cutting-edge features that are only available from Peavey, such as MidMorph<sup>®</sup> and FLS<sup>®</sup> (Feedback Locating System<sup>®</sup>). Additionally, the mixer includes Peavey's exclusive KOSMOS<sup>®</sup> bass enhancement that adds low-end response and increases high-end clarity. The XR<sup>®</sup>S also features Bluetooth<sup>®</sup> wireless connectivity for audio playback from any Bluetooth-equipped smart device or USB "jump drive."

Other features include an assignable Main/Main or Main/Monitor power amplifier with four twist-lock combination outputs. An on-board LCD conveniently displays the MP3 file name and play information along with selected effects.

Featuring the rock-solid construction for which Peavey is known, plus a dual 9-band graphic EQs and a monitor send, the XR<sup>®</sup>S is the perfect sound reinforcement solution for audio professionals needing a highly reliable mixer in an economically sized package.



## THE XR<sup>®</sup>S AND XR<sup>®</sup> AT FEATURE:

### KOSMOS<sup>®</sup>

The included KOSMOS<sup>®</sup> technology adds low-end response and increases high-end clarity.

### Bluetooth<sup>®</sup>

Wirelessly connect your device and stream your music.

### 1,000 WATTS

Packing 1,000 Watts RMS (1,500 Watts peak) of power you will have the headroom that you need.

# XR<sup>®</sup>AT Powered Mixer

The XR<sup>®</sup>AT powered mixer incorporates a 9-channel mixer and 1,000 Watts of power (1,500 Watts peak) into a unique, portable design. It is equipped the world famous Antares<sup>®</sup> Auto-Tune<sup>®</sup> pitch correction technology. This technology can literally help anyone sing in key and is used on professional recordings and live performances throughout the world.

# XR<sup>®</sup>AT POWERED MIXER

03612200



Ideal for use in small to medium sized venues, the feature-packed XR<sup>®</sup>AT comes equipped with on-board digital effects and cutting-edge features that are only available from Peavey such as MidMorph<sup>®</sup> and FLS<sup>®</sup>-Peavey's exclusive Feedback Locating System<sup>®</sup>. Additionally, the mixer includes the Peavey exclusive KOSMOS<sup>®</sup> bass enhancement that adds low-end response and increases high-end clarity. The XR<sup>®</sup>AT also features Bluetooth<sup>®</sup> wireless connectivity for audio playback from any Bluetooth- equipped smart device or USB "jump drive."

Other features include an assignable Main/Main or Main/Monitor power amplifier with four twist-lock combination outputs. Plus, the on-board LCD conveniently displays the mp3 file name, play information, setup information for the Auto-Tune feature, and selected effects. Seven channels of compression allow users to dial in the perfect level regardless of the source, making the XR<sup>®</sup>AT highly adaptable in any live setting. Dual nine-band graphic EQs with FLS, monitor send and selectable EQ round out the features on this game-changing sound reinforcement solution.

The XR<sup>®</sup>AT includes a subwoofer line output, which not only allows for the use of an external powered subwoofer, but it can also be patched back in to the power amp in the XR<sup>®</sup>AT allowing one of the power amps to run subs while the other runs the full range top boxes. It is one of the only powered mixers on the market capable of running a 4 speaker bi-amped system.

## FLS<sup>®</sup> (Feedback Locating System<sup>®</sup>)

An exclusive Peavey technology, FLS identifies feedback sources to the specific frequency.

## XR<sup>®</sup>AT also features powered by Antares<sup>®</sup> Auto-Tune<sup>®</sup>

The XR<sup>®</sup>AT includes Antares<sup>®</sup> Auto-Tune<sup>®</sup> pitch correction, a technology that can help anyone sing in key. Auto-tune is now a standard in large-scale music production, with the XR-AT mixer this important enhancement is now available to everyone. Control the Auto-Tune setting from an extreme effect to a subtle adjustment to make a good singer a great singer.

# LN™ 1263 COLUMN ARRAY

## ON-BOARD MIXER LCD DISPLAY

The onboard mixer features 4 combo inputs, each with the option of selecting a guitar input, making this the first column array designed specifically with the acoustic guitar performer in mind. Two additional media channels feature stereo 1/4" inputs and streaming audio Bluetooth in. This unique Bluetooth input can handle a separate device other than the one controlling the array. Features also include seven onboard EQ presets and eight onboard effects, with the ability to save and lock scenes along with an independent sub level control.



**Acoustic Guitar  
Optimized**

## Powerful, high fidelity sound in a compact, lightweight and low profile package

The LN™1263 is a compact, powerful, lightweight and low profile portable column array. Utilizing 1200 watts of potential maximum power, the unit contains 12 2.75" custom drivers for the mid-high column and a custom 12" driver for the subwoofer. Completely self contained, the unit has no visible cables in mono operation. Its clean design is well suited for applications where speakers should be heard and not seen. Coming in at under 50lbs, the LN1263 is extremely easy to carry: an entire PA system that can be moved by one person in one trip.

03618750

**12 High-End Drivers**

**1,200 Watts Maximum  
Power**

**Under 50 lbs**

**Stream Audio**  **Bluetooth®**

**12" Sub**

**On-Board LCD Display**



## VERSATILE SPLIT SPEAKER OPTION

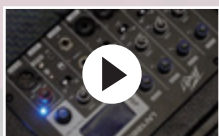
Increase your room coverage and enjoy true stereo sound by splitting the top array of speakers. This exclusive capability, allows you to quickly separate the speakers and put one six-speaker array on a separate speaker stand allowing you to use the configuration that is best for different needs.

### Split Speaker Stereo Mode

**6**  
HIGH END  
DRIVERS EACH

#### PERFORMANCE KEYS

- 1,200 watts maximum power, 127 dB maximum SPL
- Bluetooth audio control via iOS app
- Bluetooth audio input for streaming music from any Bluetooth device
- 6 channel mixer with 4 combi inputs and guitar channel selectability
- Professional and Simple mode operation
- 7 EQ presets, 8 FX, compressor for each channel
- Independent sub level control
- Rugged aluminum satellite chassis
- Twist lock speaker cable connection allows for quick attachment and remote positioning
- Multi-ply birch subwoofer construction
- Satellite speaker carrying bag included



LEARN MORE AT [PEAVEY.COM/LN](http://PEAVEY.COM/LN) ►

## Mix Remotely On Your Phone or Tablet

Control the LN1263 with a special iOS app. This Bluetooth connected app allows you to remotely control all key settings from around the room. In addition to conventional features such as EQ and Effects, the app includes Simple and Professional mode, allowing more advanced users complete control while simplifying features like compression for novice users.



Control Remotely  
Bluetooth®



# LN™ 1063 COLUMN ARRAY

## Big Coverage In A Surprisingly Small Package

Cover a wide area  
with great sound,  
using a small pro  
audio solution.

The LN™ Column Array  
Series gives you a full  
self contained system.  
This is your speaker,  
mixer, power amp and  
cables all in one.

LEARN MORE AT [PEAVEY.COM/LN](http://PEAVEY.COM/LN) ►

## The LN™ 1063 is extremely easy to carry: an entire PA system that can be moved by one person in one trip

The LN™ 1063 is a compact, powerful, lightweight and low profile portable column-array. Utilizing 500 watts of potential maximum power, the unit contains 6 2.75" custom drivers for the mid-high column and a custom 8" driver for the subwoofer. Completely self contained, the unit has no visible cables in mono operation. Its clean design is well suited for applications where speakers should be heard and not seen. The LN™ 1063 weighs 10lbs lighter than our nearest competitor.



## PERFORMANCE KEYS

- Bluetooth audio input for streaming music from any Bluetooth device
- 6 Channel mixer
- 2 Combi inputs with Guitar Channel selectability
- Frequency response 55 Hz - 18 kHz
- Satellite speaker carrying bag included
- 1 1/4" Stereo input channel
- 2 Onboard guitar channels
- 3.5 mm input
- Mix out for additional units
- 500 Watts maximum power
- 120 dB maximum SPL

## 6 High-End Drivers

## 500 Watts Maximum Power

Can be moved by one person in one trip!

Stream Audio  Bluetooth®

## 8" Sub

## On-Board 6 Channel Mixer

### ON-BOARD 6 CHANNEL MIXER


The 6 channel on-board mixer features 2 combo inputs, each with the option of selecting a guitar input, making this the first column array designed specifically with the acoustic guitar performer in mind. Two additional media channels feature stereo 1/4" inputs and streaming audio Bluetooth in. Perfect for church, convention, DJ or club applications, the LN1063 offers the best-in-class feature-to-value and performance in the industry.

18001710



# P™ SERIES PORTABLE SOUND SYSTEM

## P1 BT AND P2 BT FEATURES

- Bluetooth® stereo linking
- Bluetooth® audio input for streaming music from any Bluetooth® device  Bluetooth®
- 3 Channel mixer
- Two XLR mic inputs and 1/4" Line Inputs
- RCA/3.5 mm Stereo input channel
- P2 BT has three 6.5" Woofers with 1" high-frequency compression driver; P1 BT has two 6.5" Woofers with 1" high-frequency compression driver
- P2 BT weighs 33 lbs and has dimensions of 30"x9.25"x10.5"; P1 BT weighs 15.4 lbs and has dimensions of 23"x9.25"x10.5"

LEARN MORE AT [PEAVEY.COM/P2BT](https://www.peavey.com/p2bt) ►

## P2 BT

03619550



# P<sup>®</sup> SERIES

## ALL-IN-ONE PORTABLE PA SYSTEMS

The P Series all-in-one professional PA systems from Peavey allow you to take your music anywhere! These compact and portable powerhouses can connect to almost ANY music source. Plug in a microphone, guitar, turntable, or most any other audio source and enjoy! Our premium hi-fidelity 6.5" woofers in 2 or 3 speaker configurations along with a 1" high-frequency compression driver deliver superior sound. Stereo setup between two P Series enclosures is simple with the push of a button. Professional grade Bluetooth audio capabilities make it easy to stream music from a mobile device or computer. Connect a subwoofer and really shake the walls!

Whether you're a musician, DJ, pastor, or just want professional audio in your home or backyard, the Peavey P series delivers!



### P1 BT

03619530

LEARN MORE AT [PEAVEY.COM/P1BT](https://www.peavey.com/p1bt) ►



# ESCORT® PORTABLE SOUND SYSTEM

## Escort® 3000 & 6000

The Escort® series integrates the entire PA system into one complete, easy to use, easy to transport, highly reliable, incredible sounding package, making it the perfect choice for schools, churches, DJs, and small music groups.

The carrying case provides storage for everything needed for sound, including plenty of room for optional accessories such as microphones and cables. In addition to the included folding speaker stands, the case even includes luggage style wheels to roll the entire system away with a single hand. No heavy lifting, just heavy audio!

### Escort® 3000

- 7-channel powered mixer
- 300 watts

03608880

### Escort® 6000 Bluetooth

- 9-channel powered mixer
- 600 watts
- Long-range Bluetooth® connectivity
- Has line level subwoofer output

03608630

Optional Mixer Stand  
00496340



## ESCORT® PORTABLE SOUND SYSTEM DESIGNED FOR ONE-HAND CARRY!



Custom Latch System



Wheels for Easy Transport



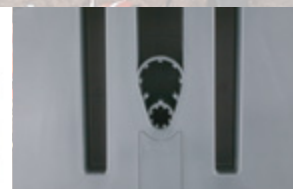
Accessory Compartment



Integral 3-Piece  
Portable Package



Two-way Pro  
Speaker System



Dual Mounting Capacity

**More escorts  
are currently in use  
than almost ANY  
other PA system  
in the world**

**LEARN MORE AT [PEAVEY.COM/ESCORT](https://www.peavey.com/escort) ►**

#### PERFORMANCE KEYS

- Portability perfected, with its one-hand carry design you can get in and out quickly.
- Includes digital multi-effects
- Exclusive MidMorph® technology is like two EQ controls in one. When cut it pulls out low-mids that can muddy the sound and when boosted it shifts to an upper-mid frequency that brightens the vocal range.
- Equipped with Peavey exclusiveFLS® (Feedback Locating System) technology. FLS takes the guess work out of finding the frequency of feedback, illuminating the exact frequency for you.
- Seven-band graphic equalizer
- USB input and RCA makes it easy to use your music from your device.
- Connect wirelessly with long-range Bluetooth on the Escort® 6000 model. This upgraded connectivity means that you can play your music from up to 50 feet away.



# IMPULSE<sup>®</sup> SERIES ENCLOSURES



## Impulse<sup>®</sup> Compacts

The Impulse<sup>®</sup> 5c and 8c are the perfect two-way speaker system for a wide range of installation environments. These lightweight-yet-rugged molded sound reinforcement enclosures are weather resistant and ideal for music playback or speech. These units are compatible with 100v, 70v or standard 8 ohm inputs. For 100v, 70v transformer operation there are selectable power levels. For 100v (70v) settings, there is a 30W(15W), 20W(10W), 10W(5W), and 5W(2.5W) tap selection.

### Impulse<sup>®</sup> 5c

BLACK 03616700  
WHITE 03616710

- 5" woofer
- 50W power handling
- Weather-resistant for sheltered outdoor use
- Available in black & white
- Weather resistant

### Impulse<sup>®</sup> 8c

BLACK 03616720  
WHITE 03616730

- 8" woofer
- 70W power handling
- Weather-resistant for sheltered outdoor use
- Available in black & white
- Weather resistant

## Impulse<sup>®</sup> Enclosures

Weather-proof, durable, top-of-the-line components and high tech design make the Impulse speakers that perfect solution for many live and installation applications. These two-way sound reinforcement enclosures are equipped with best-in-class components like Black Widow<sup>®</sup> woofer and a RX<sup>™</sup>22N titanium diaphragm dynamic compression driver mounted on a 110 by 80 degree coverage Quadratic Throat Waveguide<sup>™</sup>. It's contemporary appearance coupled with exceptional performance offer a highly desirable combination.

The light yet durable injection-molded plastic enclosure with molded-in stand mount cup eases portable use for live music or permanent install. The trapezoidal cabinet has three handles for ease of portability, and two extra angled sections on either side to allow use as a floor monitor. Two mounting point locations are available, one on top and one on the side for the Peavey<sup>®</sup> VM<sup>™</sup> 70 mounting bracket. A full length black powder coated perforated steel grille with cloth backing provides system protection and a professional appearance.

### Impulse<sup>®</sup> 1012

8 OHM BLACK 03617480  
8 OHM WHITE 03617490

### Impulse<sup>®</sup> 1015

8 OHM BLACK 03617500  
8 OHM WHITE 03617510

- 2-way full range sound reinforcement system
- Black Widow<sup>®</sup> long-throw woofer, with field replaceable basket
- RX<sup>™</sup>22N Neodymium compression driver
- Power Handling: 2000 W peak, 1000 W program
- HF Driver protected by Sound Guard<sup>™</sup> III
- Peavey exclusive Quadratic Throat Waveguide<sup>™</sup> technology, 110 by 80 degree coverage
- Rugged plastic injection-molded trapezoidal enclosure
- Cabinet has dual rear corner angled sides for floor monitor use
- Full-coverage perforated steel grille, with powder coat finish
- Pole mount molded-in for 1 3/8" diameter poles
- M6 metric fly points for VM-70, top and left side of cabinet
- Weather-proof for outdoor use

LEARN MORE AT [PEAVEY.COM/IMPULSE](http://PEAVEY.COM/IMPULSE) ►



## Flyable

M6 metric fly points for VM-70 ceiling/wall mount system, top and left side of cabinet



## RX™ 22N Neodymium Compression Driver

Improved performance over our legendary RX™ 22.



Weatherproof



Impulse® 1015

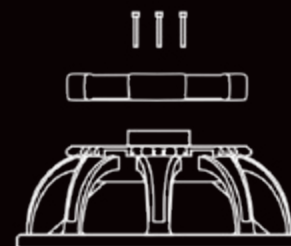


Impulse® 1012



## Black Widow® Speakers

Equipped with Black Widow® High-output woofers, these road-proven best-in-class speakers have a 4" voice coil, Kevlar-impregnated cone, voice coil cooling vent plate and a cast frame for 600W continuous power. These speakers feature Peavey's exclusive field-replaceable basket technology.



# SP® SERIES ENCLOSURES

## SP® Series

For uncompromising rock-solid live audio performance in a lighter, more compact package, the Peavey SP® Series delivers. Throw it in the van, install it in the club, or hang it from the ceiling — the SP's rugged design can handle it. The included legendary Black Widow® speakers will handle anything you give it.

### SUBWOOFERS

- 18" Black Widow Pro Rider® woofer
- Low frequency response down to 41Hz
- Pole mount plate built-in, threaded for positive pole support

### SP® 118

- 18" Black Widow Pro Rider® woofer
- 1,200 watts program, 2,400 watts peak power handling
- Multiple fly points

03614820

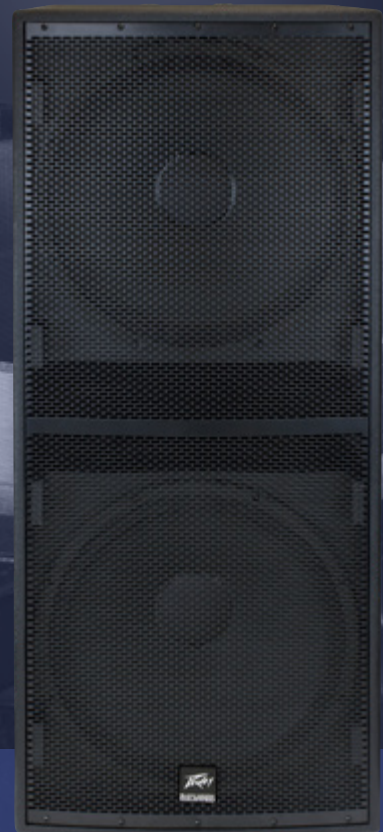
### SP® 218

- Two 18" Black Widow Pro Rider® woofers
- 2,400 watts program, and 4,800 watts peak power handling
- Tilt-back casters

03614830



SP® 118 SUBWOOFER



SP® 218 SUBWOOFER



## BLACK WIDOW® SPEAKERS

Equipped with Black Widow® High-output woofers, these road-proven best-in-class speakers have a 4" voice coil, Kevlar-impregnated cone, voice coil cooling vent plate and a cast frame for 600W continuous power. These speakers have Peavey's exclusive field-replaceable basket technology.



[LEARN MORE AT PEAVEY.COM/SP](https://www.peavey.com/sp) ►

## SPEAKER ENCLOSURES

- 15" BWX Black Widow® 4" diameter VC woofer
- RX™22CT compression driver
- Exclusive Quadratic Throat Waveguide™ technology
- Asymmetrical horn aims the sound down 10° (at the audience, not over their heads)
- 1,000 watts program, 2,000 watts peak
- Sound Guard™ III tweeter protection
- Built-in stand-mount adapter and four large rubber feet on bottom for floor use
- M8 threaded mounting suspension points (3 top, 3 bottom and 2 each side & 1 each top rear and bottom rear)

### SP® 2

- 15" BWX Black Widow® 4" diameter VC woofer
- 1,000 watts program, 2,000 watts peak

03614800

### SP® 4

- Two 15" BWX Black Widow® 4" diameter VC woofer
- 2,000 watts program, 4,000 watts peak

03614810



SP® 2



SP® 4

## RX™22CT Neodymium Compression Driver

The smooth and extended high-frequency response of the SP Series is thanks to the RX™22CT 2" titanium diaphragm compression driver.



## FLYABLE DESIGN

### SP® 2 and SP® 4

M8 threaded mounting suspension points (3 top, 3 bottom and 2 each side & 1 each top rear and bottom rear)

### SP® 118 SUBWOOFER

Multiple fly points

# PVX™ SERIES ENCLOSURES

## PVX™ SERIES LOUDSPEAKERS

Decades of experience building the best sound reinforcement enclosures in the world has led to the next generation of PVX™ enclosures by Peavey.

PVX™ Loudspeakers are some of the most versatile enclosures on the market. Equally suited for live or pre-programmed music, these enclosures are designed to be used on a speaker stand or flown vertically or horizontally for permanent installation. The new and improved PVX lineup features the addition of foam grille cloth behind the powder-coated steel grille. This new design improves the weather resistance of the loudspeakers. No matter what the application, the PVX™ series is an outstanding addition to any sound reinforcement solution.



### PVX™ 10

- 10" heavy-duty woofer with 2 3/8" voice coil & 50 oz. magnet
- RX™ 10N compression driver, with 1.0 inch titanium diaphragm
- Peavey's exclusive Quadratic Throat Waveguide™ technology, 100 by 60 degree coverage
- Top and bottom flying point inserts

03620370

### PVX™ 12

- 12" heavy-duty woofer with 2 3/8" voice coil & 50 oz. magnet
- RX™ 14 compression driver, with 1.4 inch titanium diaphragm
- Peavey's exclusive Quadratic Throat Waveguide™ technology, 100 by 50 degree coverage
- Top, bottom and right side flying point inserts

03620380

### PVX™ 15

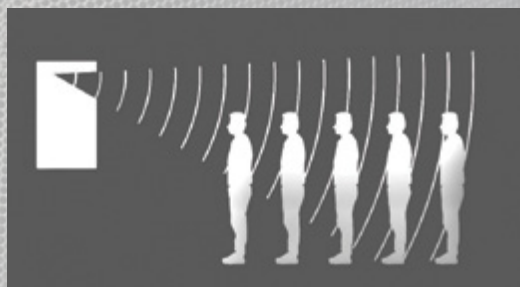
- 15" heavy-duty woofer with 2 3/8" voice coil & 50 oz. magnet
- RX™ 14 compression driver, with 1.4 inch titanium diaphragm
- Peavey's exclusive Quadratic Throat Waveguide™ technology, 100 by 50 degree coverage
- Top, bottom and right side flying point inserts

03620390

Cabinet is designed to be used as a floor monitor, making PVX™ speakers exceptionally versatile.

PVX™ series loudspeakers deliver superior sound quality by utilizing advanced materials such as the roadworthy molded polypropylene exterior. Lightweight, durable and weather resistant, these two-way speaker systems will handle more than 400 watts continuous power with 800 watts peak power. They feature heavy-duty woofers with 2-3/8" voice coils. The PVX™ 15 and PVX™ 12 include the Peavey RX™ 14 1.4" titanium diaphragm compression driver coupled to a constant directivity horn, while the PVX™ 10 features the Peavey RX™ 10N. Our Quadratic Throat Waveguide™ Technology makes our speakers more efficient at focusing the sound where it needs to be, ensuring louder performance with less likelihood of unwanted feedback.

## FEATURING Exclusive Quadratic Throat Waveguide™ Technology



Asymmetrical Quadratic Throat Waveguide horns aim their coverage patterns 15° upward and 35° downward – directing sound to your audience, not over their heads. This is more efficient, requiring less volume which reduces the potential for feedback and improves the overall sonic experience.



### Sound Guard™

Proprietary compression driver circuit remains out of the circuit until needed, offering less distortion than other approaches.

## INSTALL FRIENDLY

All three PVX™ models include multiple fly-point options so that you can hang them securely.



This graphic is for illustrative purposes ONLY, for proper rigging and safety information, see the specifications sheet or Owner's Manual.

## FEATURES

- Two-way sound reinforcement enclosure
- 400W program/800W peak power handling
- Asymmetrical horn aims the sound down 10°, at the audience, not over their heads
- Crossover network for driver protection and EQ
- High frequency driver protection
- Durable plastic injection-molded trapezoidal enclosure
- Extra angled section on right side allows floor monitor use
- Full-coverage heavy-duty perforated steel grilles, with powder coat finish and weather resistant foam cloth
- Pole mount molded-in

[LEARN MORE AT PEAVEY.COM/PVX](https://www.peavey.com/pvx) ►

# PV<sup>®</sup> SERIES ENCLOSURES

## PV<sup>®</sup> SERIES ENCLOSURES

Hartley Peavey founded Peavey Electronics on the principle of making high-quality, professional gear that sounds great but won't break the bank. We've been honing that art since 1965, and no sound reinforcement line combines performance and value like our PV Series. A full range of enclosures, subwoofers and monitors, the PV Series stacks up with heavy-duty loudspeakers, titanium compression drivers and impressive high-power handling.



PV<sup>®</sup> 15 Monitor

PV<sup>®</sup> 115

PV<sup>®</sup> 215

### PV<sup>®</sup> 115

- 15" Peavey heavy-duty woofer with 2.375" voice coil
- RX™ 14 titanium diaphragm compression driver
- Dynamic tweeter protection
- 400 watts program/800 watts peak power handling
- Heavy-duty crossover network for driver protection and EQ
- 60 by 40 degree coverage constant-directivity

00572150

### PV<sup>®</sup> 215

- Two 15" Peavey heavy-duty woofer with 2.375" voice coil
- RX™ 14 titanium diaphragm compression driver
- Dynamic tweeter protection
- 700 Watts program/1400 Watts peak power handling
- Heavy-duty crossover network for driver protection and EQ
- 60 by 40 degree coverage constant-directivity horn

00572170

### PV<sup>®</sup> 15M

#### Low-Profile Stage Monitor

- 15" Sheffield Pro 1500+ woofer w/ 2.5" voice coil
- 14T compression driver w/ titanium diaphragm
- 500 watts program and 1,000 watts peak power handling
- Angle options of either 30 or 45 degrees from the floor
- 90 x 40 Constant-directivity horn
- Sound Guard™ IV high-frequency driver protection

00570670



LEARN MORE AT [PEAVEY.COM/PV](https://www.peavey.com/pv) ►

PV® 112

PV® 118 Subwoofer

PV® 12 Monitor

## PV® 112

- 12" heavy-duty woofer
- RX™ 14 titanium diaphragm compression driver
- Dynamic tweeter protection
- 400 watts program/800 watts peak power handling
- Heavy-duty crossover network for driver protection and EQ
- 60 by 40 degree coverage constant-directivity horn

00570800

## PV® 118 SUB

- Pro 18® premium 18" woofer with a 3" voice coil and a 65 oz. magnet
- Optimized internal low-pass crossover network
- 400 watts program power handling
- Internal low-pass crossover network
- Vented bass subwoofer enclosure

00573840

## PV® 12M

### Low-Profile Stage Monitor

- 12" Sheffield Pro 1200+ woofer w/ 2.5" voice coil
- 14T compression driver w/ titanium diaphragm
- 500 watts program and 1,000 watts peak power handling
- Angle options of either 30 or 45 degrees from the floor
- 90 x 40 Constant-directivity horn
- Sound Guard™ IV high-frequency driver protection

00570650

## PVi™ SERIES SPEAKERS

### PVi™ 10 (Pair) 2-Way Speaker

The PVi™ 10 is a two-way speaker system featuring a 10" woofer and a high frequency drive on an exponential horn. The lightweight-yet-rugged, carpet covered trapezoidal enclosure with top handle is ideal for live music, speech and music playback applications. A full length, black powder-coated steel grille provides driver protection and a professional appearance. The PVi™ 10 speaker system is rated at 50 watts program power handling. Its smooth response makes this system ideal for smaller venues where space is at a premium, and its two 1/4" input connectors keep amplifier hookup simple.

LEARN MORE AT [PEAVEY.COM/PVI](https://www.peavey.com/pvi) ►



## THE PVi™ 10 SPEAKER FEATURES:

- Control-mount adaptor
- Side-position monitor
- 50 watts continuous, 100 watts program
- Two-way enclosure
- Horn-loaded high frequency driver
- 10" premium speaker
- Metal grille
- Carpet covered



00570810



**SIDE-POSITION  
MONITOR**

# PVX™<sub>p</sub> SERIES POWERED ENCLOSURES



## EQUIPPED WITH ADVANCED DSP

The new PVXp includes the most advanced digital signal processing to date. Using high sample rates and quality AD converters, our processing provides a wide variety of EQ and presets. Not only does our technology allow the user to customize EQ settings and save presets, it allows Peavey to optimize performance using tools such as loudness compensation to maximize performance, clarity and volume.

[LEARN MORE AT PEAVEY.COM/PVXp](https://www.peavey.com/PVXp) ▶

# The ultimate powered, portable and punchy speaker enclosure!

New for 2022, the PVXp™ Bluetooth® is the third generation of one of the bestselling speaker enclosures in the industry. Backed by over 50 years of R&D, this speaker enclosure harbors many unique features that combine to deliver best-in-class performance and reliability.

**Bluetooth Audio In and Remote Control:** Our speakers combine the latest technology to allow both remote control via iOS app and Bluetooth® audio streaming in. Nothing has ever been easier: control playback, adjust volume and EQ, all from your iOS device.

## MULTIPLE FLY POINTS

## FUNCTIONALITY WITH FLYABILITY

This graphic is for illustrative purposes ONLY, for proper rigging and safety information, see the specifications sheet or Owner's Manual.



## PVX™ p 15, PVX™ p 12, PVX™ p 10

128dB Peak SPL PVXp 15 & 12 • 122dB Peak SPL PVXp 10

### PERFORMANCE KEYS

- Two-way bi-amped sound reinforcement enclosure
- RX14™ compression driver, with 1.4 inch titanium diaphragm (PVXp 15 and PVXp 12) or RX10™ compression driver, with 1 inch titanium diaphragm (PVXp 10)
- Total of 980W peak dynamic power (PVXp 15 and PVXp 12) or total of 520W peak dynamic power (PVXp 10)
- DSP control for precise crossover, EQ and limiting functions
- Bluetooth® input is via a dedicated input channel
- Mix/Thru Output is via a male XLR jack
- Extra angled section on right side allows floor monitor use



PVX™ p 12  
03620470



PVX™ p 15  
03620490



PVX™ p 10  
03620450

## COMPONENTS MATTER!



## Best-in-class diaphragm, bigger & better Vocals sound better with bigger diaphragm

The upgraded titanium diaphragm in the PVXp is 3x the power handling and 50% larger than traditional. This greatly improves vocal clarity, the small diaphragm drivers found in many other similar speakers miss the key frequencies needed for vocals. Enjoy better vocal intelligibility for spoken word or singing applications.



Compare to other “2,000 watt” speakers and you’ll know why sound is our strength!

## PVX™ p Subwoofer

128dB Peak SPL

The Peavey PVX™p Sub features an ultra-reliable power section that provides a total of 800 watts of peak available power with DDT™ compression. This powered enclosure also features a 15" heavy-duty woofer with a 3" voice coil. The secret to that room-filling bass boom is the Peavey exclusive Kosmos® technology. Kosmos® is a low frequency energy generator that adds the perfect sub-harmonics for superior bass performance.

The PVX™p Sub provides a balanced input via a combination jack that accepts balanced TRS 1/4" input as well as a balanced XLR input. There are two balanced thru high pass XLR outputs, and a Full-Range XLR output. There is an adjustable Level control, as well as a combination LED indicator, that illuminates when power is on and when the “soft-limiting” DDT circuit is activated.

The Peavey PVX™p Sub is housed in a durable enclosure that includes a pole mount for additional PVX™ speakers, a black powder-coated steel grille provides driver protection and a clean, professional appearance.

# PVs<sup>®</sup> SERIES SUBWOOFERS

## PVs<sup>™</sup> Series Subwoofers

With over 57 years of experience manufacturing sound reinforcement equipment, Peavey is proud of its PVs<sup>™</sup> series of subwoofers. From the punchy and portable PVs 15 to the extreme deep bass of the PVs 18, these speakers are perfect for live applications. Where compact and portable are the primary requirements, the amazing new PVs 12 fits the bill.

All PVs subwoofers use high-density materials in their construction to ensure all the energy from the drivers is directed to the audience and not absorbed by the cabinet. Our proprietary drivers and power amps ensure maximum SPL while maintaining the legendary reliability Peavey products are known for.

Built-in crossovers and high-pass outputs ensure our subwoofers can be used in almost any application with a wide variety of speakers and our proprietary Bass Enhancement feature, which allows our speakers to outperform any other subwoofer in their class.

Convenient features such as steel handles and rugged locking casters make the PVs perfect for the road, while the compact PVs 12 makes hiding a subwoofer for an installation easier than ever. Whether you are on the road or in a club, church, restaurant, or bar, the PVs subs are the perfect solution for reliable low end.



### PVs<sup>™</sup> 15 Subwoofer

- 15" Heavy Duty Woofer
- Large heavy-duty locking casters with damped bearings
- Compact dimensions for a 15" woofer based sub
- Threaded Pole Mount with speaker pole included

03619310



### PVs<sup>™</sup> 18 Subwoofer

- 18" Heavy Duty Woofer
- Large heavy-duty locking casters with damped bearings
- Compact dimensions for an 18" woofer based sub
- Threaded Pole Mount with speaker pole included

03619340



### PVs<sup>™</sup> 12 Subwoofer

- 12" Heavy Duty Woofer
- Compact dimensions for a 12" woofer based sub
- Threaded Pole Mount with adjustable height speaker pole included

03619280



## FEATURES

- Vented bass powered subwoofer enclosure
- 1,000 watts peak available power
- Bass Enhance button for increased bass impact
- XLR/quarter inch combo jack input
- Ground Lift for lifting cable shield from ground
- Full-coverage heavy-duty perforated steel grill
- Steel handles
- Power Amp has forced air cooling for maximum reliability
- DSP based crossover, compression, limiting and EQ
- Two High-Pass XLR outputs, One Full Range Thru XLR output
- Polarity Switch for polarity reversal of subwoofer

LEARN MORE AT [PEAVEY.COM/PVs](https://www.peavey.com/pvs) ►

SPEAKER MOUNTS

# VM™ SERIES MOUNTING SYSTEM



**MOST RUGGED,  
DURABLE AND  
VERSATILE MOUNT  
ON THE MARKET**

## VM™ 70

The VM™70 allows you to mount your Peavey enclosures exactly where you need them. Its dual-adjustment design allows you to adjust front to back and side to side. Perfect your install by running your wires through the center of the connector pole. This is the perfect hardware to match with the perfect enclosures.

Supports up to 70 pounds. Available in black and white.

Black 03011050  
White 03011040

## VM™ 70 works with these speakers:

PVX™ 15	PVX™p 10 DSP
PVX™ 12	PVX™p 10
PVX™ 10	Impulse® 1015 8 Ohm
PVX™p 15 DSP	Impulse® 1012 8 Ohm
PVX™p 12 DSP	



## VM™ 35

This durable and solid speaker mount was designed to give you maximum adjustability. Supports up to 35 pounds. Available in black and white.

Black 03010770  
White 03010760

## VM™ 35 works with these speakers:

Impulse®6  
Impulse®6T  
Impulse®652S  
Impulse® 7  
SSE™-26  
Impulse® 100 cabinets



IPR™2  
POWER  
AMPLIFIERS

The best pound-per-watt lightweight  
power amp on the market  
UP TO 7,000 WATTS AT ONLY 14 POUNDS

IPR™2 POWER AMPLIFIERS

The groundbreaking IPR™2 Series utilizes an advanced design that makes these light on weight, but heavy on power and reliability. Designed with a resonant switch-mode power supply and a high-speed class-D topology that yields the highest audio resolution and efficiency available – and all at a cost that shatters the old-guard paradigm of power-amp valuation. This isn't about "dollars per watt." This is "pennies per watt".



The IPR™2 power amplifiers are designed for years of reliable, flawless operation under rigorous use. They are built to handle power swings, making them the ideal amp for many challenging environments. All four models are equipped with a two-channel independent fourth-order Linkwitz-Riley crossovers and Detented input controls. Unlike many competitive amps, the IPR™2 series is designed to produce full rated power from the moment you turn it on until the time you turn it off. Just turn it on and you are ready to go with all of the power that you need, all night long.

DDT™ (Distortion Detection Technique)

This exclusive Peavey technology helps you avoid clipping while also protecting your performance. DDT™ keeps everything musical as it helps to prevent square wave clipping.



SPECS

	IPR™2 2000	IPR™2 3000	IPR™2 5000	IPR™2 7500
Rated watts 2ch x 2 ohms	1100 watts 20ms repetitive burst 900 watts 1% THD both channels driven @ 1kHz	1750 watts 20ms repetitive burst 1450 watts 1% THD both channels driven @ 1kHz	3230 watts 20ms repetitive burst 2530 watts 1% THD both channels driven @ 1kHz	4750 watts 20ms repetitive burst 3750 watts 1% THD both channels driven @ 1kHz
Rated watts 2ch x 4 ohms	600 watts 20ms repetitive burst 570 watts 1% THD / 530 watts 0.15% THD, both channels driven @ 1kHz	950 watts 20ms repetitive burst 900 watts 1% THD / 815 watts 0.15% THD, both channels driven @ 1kHz	1985 watts 20ms repetitive burst 1700 watts 1% THD / 1470 watts 0.15% THD, both channels driven @ 1kHz	2800 watts 20ms repetitive burst 2450 watts 1% THD / 2020 watts 0.15% THD, both channels driven @ 1kHz
Rated watts 2ch x 8 ohms	370 watts 20ms repetitive burst 325 watts 1% THD / 300 watts 0.15% THD, both channels driven @ 1kHz	525 watts 20ms repetitive burst 500 watts 1% THD / 430 watts 0.15% THD, both channels driven @ 1kHz	1175 watts 20ms repetitive burst 1025 watts 1% THD / 880 watts 0.15% THD, both channels driven @ 1kHz	1550 watts 20ms repetitive burst 1425 watts 1% THD / 1200 watts 0.15% THD, both channels driven @ 1kHz
SKU	03609460	03609520	03004350	03004250

LEARN MORE AT [PEAVEY.COM/IPR2](http://PEAVEY.COM/IPR2) ►

# POWER DISTRIBUTION

## ISPD™ PRO POWER SEQUENCER

### Intelligent Sequential Power Distribution

ISPD™ PRO



04000170

The iSPD™ Pro is a programmable power sequencer with many applications in the audio/video industry. Each of its 8 power outlets is individually controlled and its delay time can be individually set. Any of the 8 outputs can also be configured for constant on. Protect your system with an iSPD™ Pro.

#### PERFORMANCE KEYS

- 8 power outlets with individually adjustable delay time
- Front panel or remote power sequence control
- Additional units may be linked for expanded capacity
- Control Graphical interface program for custom configuration and monitoring over Ethernet
- Maximum load current on each channel 15A

## Do I Need A Power Sequencer?

There are several reasons to use a power sequencer to turn on system equipment. When powering on sound system equipment, it is always a good idea to power on low level equipment like mixers and signal processors first allowing them to stabilize before energizing the power amplifiers. This helps prevent unintended pops and noises from being amplified and sent to the loud speakers. Most electronic equipment requires a surge of power from the power line when it is first turned on. This is an even bigger issue for high power devices like power amplifiers. By sequencing the turn-on of equipment, the instantaneous power demand can be greatly reduced.



Access and control the ISPD Pro remotely via PC desktop software

# CS® SERIES POWER AMPLIFIERS

## CS® SERIES POWER AMPLIFIERS

Building on the reputation of the world-famous Peavey CS® 800, which conquered the high-powered amp market in the 1970s, the CS® Series is the global standard bearer for workhorse reliability. Over the years, these amps have benefited from many of Peavey's most popular audio innovations, including our exclusive DDT™ compression/anti-clipping protection. With its 2RU design and high power ratings the CS® Series power amps are leaner, louder and lighter than ever.



### CS® 4080

#### 2,040 Watts Per Channel at 4 Ohms

The standard for subwoofer amps. At 2,040 watts per channel at 4 ohms, there may not be a more powerful subwoofer amplifier on the planet!

00511200

#### PERFORMANCE KEYS

- 2 temperature-dependant variable speed fans
- 2040 watts (rms) per channel at 4 ohms
- 1250 watts per channel at 8 ohms
- 4080 watts at 8 ohms bridged
- 2-rack-space stereo power amp featuring DDT

[LEARN MORE AT PEAVEY.COM/CS](https://www.peavey.com/cs) ►

### THE CS® SERIES FEATURES:

#### DC VOLTAGE PROTECTION

If an amplifier channel detects DC voltage or subsonic frequencies at its output terminals, the output triac crowbar circuitry will activate immediately to prevent speaker damage.

# Legendary Reliability with Extreme Power for Companies and Installations



## CS® 6000

The CS 6000 power amplifier is designed to provide years of reliable, flawless operation under rigorous use. This amplifier offers the sonic superiority and unsurpassed reliability for which Peavey is famous, while remaining surprisingly compact. Advanced technology and extensive protection circuitry allow operation with greater efficiency into difficult loads and power conditions. The DDT (Distortion Detection Technique) circuitry ensures trouble-free operation into loads as low as 2 ohms. DDT protects drivers and ensures that sonic integrity is maintained, even in extreme overload conditions. The CS's high-efficiency design uses multi-rail class-H technology to produce high output power while reducing losses. Massive heat-sinks and a high volume cooling fan maintains a lower overall operating temperature, resulting in longer output transistor life.

03617060



### PERFORMANCE KEYS

- Distortion Detection Technique (DDT)
- Line voltage selector switch
- High volume cooling fan
- 100 Hz, 24dB/octave, Linkwitz-Riley Crossover
- Front panel LEDs: DDT, Signal, Thermal Protect and Power
- Switchable 2nd order 40Hz high pass filter

## THERMAL PROTECTION

The internal fans will keep the amplifier operating well within its intended temperature range under all normal conditions. If a channel's heat sink temperature reaches 85 degrees, that channel will independently protect itself by muting its input signal and shut down until it has cooled.



Legendary for its powerful and reliable touring-class sound reinforcement tools, Crest Audio® is a global leader in designing and manufacturing power amplifiers for live, commercial and networked sound systems, and a complete line of mixing consoles for live and installed audio markets.

Crest Audio burst onto the audio scene in the late 1970s with the singular goal of advancing live sound through bulletproof engineering. The low noise, high headroom and live sound features Crest Audio was able to pack into its mixers set a new industry standard, and they immediately became indispensable on the touring circuit. Crest Audio soon found ways to incorporate more punch into everything from preamps to loudspeakers and everything on the rack in between.



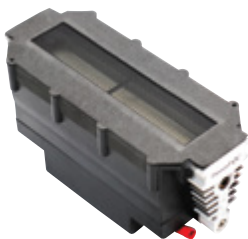
# THE REVOLUTIONARY POWERED

## VERSARRAY™ PRO

WITH  Dante®

The Versarray™ Pro is the perfect solution for pro audio applications where high output, perfect coverage, and pristine high fidelity audio is required.

### WORLD CLASS COMPONENTS



#### Mark III Ribbon Drivers

Audio quality has never been better. Using our Mark III ribbon drivers and proprietary CLEAR FORM Waveguide, the clarity of our high end is unrivaled.

#### 12" NEO Black Widow® Loudspeaker

The VR112 features the Peavey exclusive Ram Air Cooling design, a dissipation process that radiates heat away from the voice coil. RAC works in conjunction with a neodymium-loaded, 12" NEO BW® loudspeaker with dual 4" voice coils to allow greater efficiency and power handling. The Black Widow speaker also features Peavey's exclusive field replaceable basket technology.





# VERSARRAY™ PRO

World class control, reliability, power, and audio quality.

## Complete Network Control for Great Sound In Any Room

The Versarray™ Pro provides both quick and easy setup along with advanced networking control to create the most reliable and versatile system in mid-sized line arrays.

- FIR Filters
- 10-band parametric EQ
- Noise gate
- Auto off/on
- Limiter
- Auto-hang quick push button setup via rear panel
- Network control and audio via single CAT 5/6 cable
- Redundant Dante and analog audio for reliability

## Quick & accurate Setup thanks to innovative Hardware

With our revolutionary **FlyQWIK hardware**, the fully articulating Versarray™ Pro system can be deployed in a fraction of the time required by comparable products.

Fast and easy single pin adjustment with handle

## FULLY ARTICULATING!

The Versarray™ Pro is a fully articulating array, providing configurations impossible with comparably priced systems. This means near perfect coverage and audio quality in a wider variety of applications.



## VR-Pro Sub

03617340

### PERFORMANCE KEYS

- Compact and flyable sub
- Dual 15" Black Widow® Low Rider speakers
- 3,000 watts available dynamic power
- Full power down to 35 Hz
- Peak SPL 134dB
- Bulletproof steel flying hardware
- Dante® enabled networking

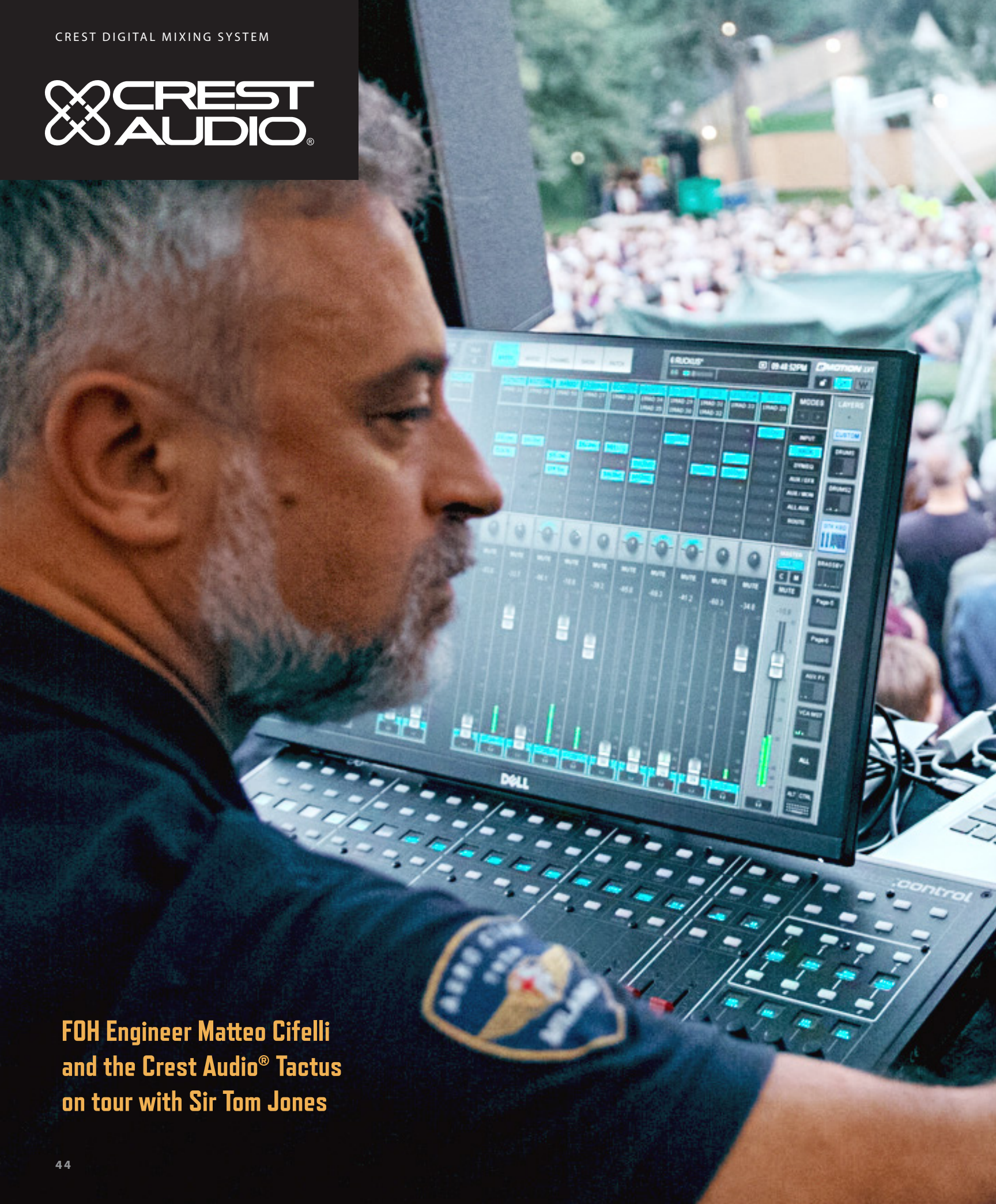
## VR112

03617310

### PERFORMANCE KEYS

- Fully articulated powered line array
- 3,000 watts
- Dual Mark III ribbon drivers
- Dual Voice Coil 12" NEO Black Widow® speaker
- Peak SPL 131dB
- Auto-Hang DSP Setup Technology
- Hybrid cabinet construction
- FlyQWIK - flying hardware
- Dante® enabled networking

[LEARN MORE AT PEAVEY.COM/VERSARRAY](https://www.peavey.com/versarray) ▶



**FOH Engineer Matteo Cifelli  
and the Crest Audio® Tactus  
on tour with Sir Tom Jones**

# THE LIVE LEADER

## Tactus™ Digital Mixing System

Crest Audio® continues its legacy of high performance audio mixing with the revolutionary Tactus Digital Mixing System. Tactus provides all of the versatile features of touring class digital consoles without the impractical size and bulk of most digital desks and without the complicated menus necessary to access important functions.

The Tactus System provides up to 256 channels of high-quality audio, routed and distributed over a data network with super-low latency and an uncompressed 96kHz audio sample rate. The “Tactus.Stage” and front-of-house “Tactus.FOH” interfaces plus the “Tactus.Control” provide a portable and tactile set of faders and controls to accompany the extensive touch-screen controls of the Waves LV-1 live mixing software.



SEE & HEAR IT ON [PEAVEYCOMMERCIALAUDIO.COM/TACTUS](https://www.peaveycommercialaudio.com/tactus) ►



## Tactus™.Stage

The Tactus.Stage includes 32 microphone/line inputs and 16 line plus to 2 AES outputs. The digitally controlled high-quality mic preamps feature ultra-low input noise, high slew rate, very low THD, and 66dB adjustment range in 1dB steps to maximize dynamic range. An integrated gigabit Ethernet switch allows for easy networking. Users also benefit from the option of combining Tactus.Stage I/O interfaces for a total of 64 stereo inputs by 32 stereo outputs.

03612030

- 32 microphone/line inputs
- XLR mic and TRS 1/4" line inputs
- 16 line outputs
- Mic input accepts a +27 dBu input signal without a pad
- High performance digitally controlled microphone preamps
- 48-volt phantom power switchable on every microphone input
- Two AES digital outputs
- Integral gigabit Ethernet switch for easy networking
- Waves® SoundGrid™ digital audio network protocol
- Supports sample rates of 44.1 kHz, 88.2 kHz and 96 kHz
- Headphone output with level control
- MIDI in and switchable out or thru



## Tactus™ Digital Mixing System

The Tactus Digital Mixing System redefines mixing by providing a simple, customizable touch-screen operating interface that puts all of the audio routing, processing and mixing tools within easy and immediate reach.

Designed to work with the new Waves LV1 eMotion™ Mixer for SoundGrid®, the Tactus Digital Mixing System is one of the most innovative and feature-rich digital audio mixing platforms ever devised. In addition to providing a full complement of professional features, the Tactus system allows the use of Waves audio processing plug-ins for live events.

The Tactus hardware is comprised of the Tactus.FOH™, the audio processing core for the system, and the Tactus.Stage™, a 32-in/16-out remote stage box. The modular capability of the Tactus Digital Mixing System, which interconnects via standard Gigabit Ethernet cabling and an internal Gigabit switch, allows multiple configurations in a range of channel counts to best suit each application.



- Primary server for the Tactus Digital Mixing System, hosting and supporting the eMotion LV1 software mixing platform
- The Tactus.FOH will function as a standalone core for an 8 in, 8 out mixing platform
- 8 balanced microphone/line inputs, XLR, TRS and 1/4" phono
- 8 balanced outputs: first 4 are male XLR connectors, 2 of which have parallel TRS jacks, plus 4 additional TRS jacks
- 48-volt phantom power switchable on every microphone input
- High performance digitally controlled microphone preamps
- Two AES digital inputs
- Integral gigabit Ethernet switch for easy networking
- Waves® SoundGrid™ digital audio network protocol
- Supports sample rates of 44.1 kHz, 88.2 kHz and 96 kHz
- External word clock input and output;
- Headphone output with level control
- MIDI in and switchable out or thru

## Tactus™.FOH

The Tactus.FOH is powered by the Waves SoundGrid audio processing/networking platform, ensuring extremely low latency with precision audio processing. When combined with the new Waves LV1 eMotion Mixer for SoundGrid, the products result in a mixing platform that is unsurpassed in the industry with regard to features, audio quality, and flexibility. The Tactus.FOH frame provides 8 local microphone/line inputs and 8 line outputs in addition to 2 AES outputs and serves as the audio signal processing engine.

03616330

## WAVES LV1 eMotion software

The Crest Tactus hardware and Waves LV1 eMotion software combine to create a high- quality, flexible live-sound, mix system. The system's modular approach provides unprecedented scalability to meet a wide variety of mixing applications from small corporate to houses of worship and music concerts. The components for I/O, DAWs, processing, touch screens and tactile controllers, can be added as required to meet the needs of your application. All of the processing within the Waves LV1 eMotion software is based on plugins for easy channel and output processing customization.

The Waves LV1 eMotion mixer application runs on a Windows® PC or Mac® with one, two or three multi-touch screens. Additionally one or two Tactus.Control motorized faders hardware surfaces can also be added for tactile control if desired.



## Tactus™.Control

The Tactus™.Control is designed to supplement the LV1 eMotion touch screen by providing moving faders, lighted buttons and knobs for the most used functions. It has 16 motorized channel faders, with Mute Cue and Select buttons along with a multi line scribble strip display. These can follow screen layer selections or be locked on a layer for expanded control. There are two Master faders that can be mapped to any input or master fader in the console. A single control knob follows on screen parameter selection for quick and easy adjustment. It also has 8 Mute group buttons, 8 User buttons with label screens, 4 plugin control knobs, scene, and layer control buttons, cue level and clear. The Tactus.Control connects via USB.

03615110

**eMOTION**/LV1  
WAVESLIVE



# 6505<sup>TM</sup> SERIES REISSUE



# 6505<sup>®</sup>

## SERIES REISSUE

**To mark the 30th anniversary of one of the best and most imitated amps of all time, an amp that literally helped create an entire genre of music, Peavey is proud to reissue the 6505 1992 Original and 6505 II.**

Contrary to much folklore since the amplifier's inception, the recipe has remained virtually unchanged. However, over the course of time, component suppliers have experienced changes of ownership and changes to their manufacturing processes, things which can ultimately influence tone and unit-to-unit consistency.

After countless hours of A/B comparisons, conversations with scores of users and artists, and deep dives into the amplifier at a component level, we discovered some items had drifted. In particular, one of the most important items: the output transformer. The changes over the years resulted in a midrange that varied from amp to amp, so the purists here at Peavey decided to search for a solution.

**That led us to develop a top-secret output transformer, made in an undisclosed location to mimic the magical crushing tone of the original series.**

These reissues are true to form cosmetically and sonically, going as far as returning to the plexiglass on the front of the 6505 II. Often imitated, our competitors have gone to great lengths to duplicate our success, but none are closer to the original than these. Peavey is proud to reissue these legendary amplifiers, the 6505 series.

# 6505<sup>TM</sup> SERIES REISSUE

## 6505<sup>®</sup> 1992 Original Head



The Peavey<sup>®</sup> 6505<sup>®</sup> 1992 Original is the result of extensive research and development to produce the ultimate rock'n'roll guitar amp, featuring super rock crunch, harmonic-rich sustain, and screaming metal drive like you've never heard from another amp. The undisputed go-to guitar amplifier for scores of rock, hardcore and metal bands for its raw tone, relentless power and road-proven reliability, the 6505 features five 12AX7 preamp tubes and four 6L6GC power amp tubes, with presence and resonance controls and three-band EQ for taming its notorious tone. These features, combined with its classic ultra-high gain preamp capabilities and monstrous 120 W power section, result in an amp with awesome stage presence and enough volume for any gig. For maximum flexibility, a footswitchable effects loop, preamp output and bright/crunch voicing switches (rhythm channel) have also been included. Because of its singular design and distinguished tone, the 6505 is in a category all its own.

LEARN MORE AT [PEAVEY.COM/6505](https://www.peavey.com/6505) ►



## Features

- High and low gain inputs
- 120 watts (rms) into 16, 8, or 4 ohms (switchable)
- 2-channel preamp switchable on front panel or remote footswitch
- Rhythm channel: pre-/post-gain, bright and crunch switches
- Five 12AX7 preamp tubes and four 6L6GC power amp tubes
- Channels share 3-band EQ
- Presence and resonance controls
- Switchable post-EQ effects loop
- Preamp output
- Footswitch included
- Lead channel: pre-/post-gain
- Universal AC Input Selector for worldwide use

03619250

# 6505™ SERIES REISSUE

## THE UNDISPUTED SOUND OF METAL

The 6505® defined the sound of today's heavy metal. It remains the most recorded amp in rock and the first choice of players that demand the very best. Each amp in the 6505® family delivers ultra-high gain that you can sculpt to create your signature tone.



03620070

## 6505® II Head

Peavey's classic high-gain legacy continues with the 6505® II. Like the original 6505® head, the 6505 II offers two channels. However, the 6505 II adds separate EQ, Resonance, and Presence controls to each channel, giving you more control and flexibility. The new footswitch provides foot control of channel selection, effects loop, and the newly added ability to select the Crunch feature. Now you can instantly obtain that extra gain in the Rhythm Channel with your foot and never have to take your hand off the guitar. Finally, the Clean Channel has been added, completely redesigned to sound much cleaner, and has one 12AX7 devoted to just the Clean/Crunch.

# MODERN METAL'S RESONANCE

The 6505® defined the sound of today's heavy metal. It remains the most recorded amp in rock and the first choice of players that demand the very best. Each amp in the 6505® family delivers ultra-high gain that you can sculpt to create your signature tone.

**Colin Richardson**, a producer whose credits include Machine Head, Chimaira and more, explains the impact of the Resonance Control this way:

"When you throw in the Resonance, you almost get an **EXTRA SUB-HARMONIC** that is below where the bass is, they're some of the **HEAVIEST TONES** I've ever tracked."

[LEARN MORE AT PEAVEY.COM/6505](http://PEAVEY.COM/6505) ►

## PERFORMANCE KEYS

- Six 12AX7 preamp and four 6L6GC power amp tubes
- Two distinct tube channels with footswitch control
- LED "active" indicators for each channel
- Bright switch for Rhythm channel
- Crunch switch on Rhythm channel with footswitch control
- Separate equalizer sections for each channel
- Separate power amp controls (Resonance and Presence) for each channel
- Separate preamp controls (Pre and Post Gain) for each channel
- Standby power switch
- Bias test points on rear panel
- Effects loop with footswitch control
- 1/4" Preamp output jack
- Speaker impedance selection switch (4, 8, 16 ohm)
- Two parallel 1/4" speaker output jacks
- 120 watts output power
- Metal three button footswitch with detachable 25' cable
- Universal AC Input Selector for worldwide use



# 6505™ SERIES REISSUE

## 6505® II Straight and 6505® II Slant 412 Cabinets



03620180



03620170

# Three producers changed the landscape of metal using the one amp that made it possible

Designed to the exacting specifications of our original 1992 version with a few basic updates that have been requested by countless artists over the years. The all-new Sheffield 1230+ speakers harken back to the earliest original Sheffield design that initially sealed the deal back in 1991. These are loaded in a biplanar-aligned, infinite baffle, closed-back cabinet. Dual 1/4" jacks with Stereo/Mono selector. 300W(rms) power handling. Solid Birch plywood construction, recessed handles, and heavy-duty pop-out casters. 16 Ohms mono, 8 Ohms per side stereo.

The 6505 series amplifiers and enclosures are the result of extensive research and development to produce the ultimate products for guitarists. With the 6505-1992 Original, 6505 II, and 6505MH heads, you'll experience super rock crunch, harmonic-rich sustain, and screaming drive like you've never heard before. Production models are identical to those used by countless legendary artists for recording, as well as on tour.

## Features

- 4 - 12" Sheffield 1230+ speakers
- 300W handling
- Dual 1/4" jacks
- Stereo/Mono switch
- High-density Birch plywood construction
- Recessed handles
- Heavy-duty pop-out casters
- 16 ohms mono, 8 Ohms per side stereo
- 30"W x 32-3/8"H x 14-1/8"D
- 96 lbs.

"We'd always been trying to mod amps or do little tricks with pedals before the preamp, and [the 6505] was the first amp you could plug straight into for that heavier, thrashier tone."

**Andy Sneap**

*Producer/Mixer: Dimmu Borgir, Machine Head, Job For A Cowboy, Arch Enemy, Bullet For My Valentine*



"The 6505 might be on 60-70% of releases that have come out in the last 20 years. It's my go-to amp, first choice, the one the others have to beat, every single session."

**Colin Richardson**

*Producer/Mixer: Machine Head, Bullet For My Valentine, Chimaira, Trivium, Cradle of Filth, Daath*

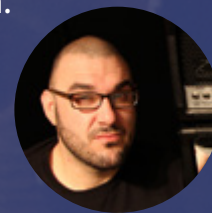
*Photo: Mick Taylor/Future Publishing*



"[The 6505] provides a perfect amount of gain. I haven't stopped using it because it has consistently been awesome for me. I think the amp just provides the perfect tone for any metal situation."

**Jason Suecof**

*Producer/Mixer: All That Remains, August Burns Red, Trivium, The Black Dahlia Murder, Whitechapel*



# 6505™ SERIES



## 6505® MH Mini Head 20W Tube Guitar Amplifier

The 6505® MH delivers the crushing metal tones that all Peavey 6505® amps are known for, but in a small package. This no compromises amp follows the same gain structure as its big brother. Two EL84 power tubes and three 12AX7/ECC83 preamp tubes. Footswitch included.

03614180

PEAVEY



Power attenuator  
adjusts the output  
from 20 watts down  
to as low as one watt.

Integrated speaker  
defeat switch allows  
for silent recording.

MSDI mic/cabinet  
simulator technology for  
recording and performing  
without a cabinet.

The famous 6505®  
Resonance control keeps  
the extreme low-end tight,  
allowing you to dial-in that  
perfect metal tone.

USB output with  
advanced speaker  
simulation allows for  
great-sounding and  
easy home recording.



# INVECTIVE™ SERIES

Misha Mansoor / Lead Guitarist  
Periphery / Bulb

## The first high-gain amplifier to deliver PRISTINE CLEAN

**invective™**

High gain performance amps are typically just about gain. The invective™ starts with the no-compromise high-gain performance that legendary Peavey® amps like the 6505® are known for, then adds a level of versatility that is unprecedented in an amp within this class. The three channels on the invective™ each deliver a distinctive sonic-range and the long list of included controls allow you to dial in that perfect tone. Use the footswitch included to quickly switch from one awesome tone to the next. Switch from metal to a flawless classic rock tone, then switch to a deep clean jazz tone, it's all there and everything in-between.

[LEARN MORE AT PEAVEY.COM/INVECTIVE](https://www.peavey.com/invective) ►

Photo: Randy Edwards

## invective™ .120 HEAD

- Delivers the legendary 6505® tone with the addition of more clean and controls
- 3 distinctive channels: clean, very clean, and lead/crunch
- Equipped with 4 matched 6L6GC output tubes and 6 select 12AX7 preamp tubes
- Performance-optimized footswitch with 9 presets
- Pedalboard-friendly, the clean channel was designed to faithfully amplify your favorite effects
- Integrated, selectable pre-gain boost included
- Adjustable noise gate, optimized for palm muting
- Includes two 9VDC auxiliary power jacks on the back panel to power your pedals

03615860

## Legendary Gain. Pristine Cleans. Best-in-class versatility.

### FRONT PANEL

- Single input with four key channels
- Clean channel with boost drive and tone
- Very clean channel with gain/low/mid/high/post
- Lead/crunch channel input with muting gate threshold and lead/crunch channel with boost level and tone
- All channels, as well as the channel select with bullet LEDs, are remote switchable
- Both the lead and crunch channels have independent pre- and post-gain controls
- All channels have shared low/mid/high EQ

### REAR PANEL

- Paralleled speaker outputs with impedance selector
- Exclusive Peavey MSDI mic and cabinet simulation direct output, record silently with full-gain
- MIDI out/thru
- MIDI footswitch input



# INVECTIVE™ SERIES



## INTEGRATED MIC/CABINET SIMULATOR

With Peavey's exclusive MSDI technology, you get that perfectly mic'd up tone with no cabinet or live amp volume. Originally developed in collaboration with Joe Satriani, MSDI is perfect for recording or live performance where low stage volume is needed.



## TEN TOTAL TUBES

The Invector .120 head is equipped with four matched 6L6GC output tubes and six select 12AX7 preamp tubes.



## PEDAL-FRIENDLY DESIGN

- Optimized for use with multiple pedals
- Includes two 9VDC auxiliary power jacks on the back panel to power your pedals
- Clean channel was designed to faithfully amplify your favorite effects



## invector™ FOOTSWITCH

The footswitch included has nine presets to further help the player achieve their desired tone, as well as a remote switchable rack loop and effects loop.



invector™ .120 Head  
03615860

## invective™ CABINETS

The invective™.120 HEAD breaks new ground as the best-of-both worlds amp, delivering both legendary crunch and pristine cleans. The invective™ cabinets deliver that same innovative duality. Using a combination of Celestion Vintage 30 and a Celestion Creamback H you get access to both tight low-end tones and the break of the Vintage 30 in one cabinet.

- Solid Pine finger jointed construction
- Combination of Celestion Vintage 30 and a Celestion Creamback H
- Stereo/Mono input switch
- Dual speaker inputs (parallel mono)
- 16 Ohms mono, 8 Ohms per side stereo

## invective™ 212 CABINET

- 1 x 12" Celestion Creamback H
- 1 x 12" Celestion Vintage 30

03616670

## invective™ 412 CABINET

- 2 x 12" Celestion Creamback H
- 2 x 12" Celestion Vintage 30

03617050



# INVECTIVE™ SERIES

investive™ .MH

## Legendary High-Gain Performance & Pedal-Friendly Clean in a Mini Head



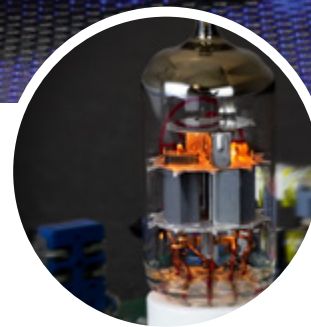
### PEDAL-FRIENDLY DESIGN

- Optimized for use with multiple pedals
- Includes two 9VDC auxiliary power jacks on the back panel to power your pedals
- Clean channel was designed to faithfully amplify your favorite effects



### INTEGRATED MIC/ CABINET SIMULATOR

With Peavey's exclusive MSDI technology, you get that perfectly mic'd up tone with no cabinet or live amp volume. Originally developed in collaboration with Joe Satriani, MSDI is perfect for recording or live performance where low stage volume is needed.



### TUBE TONE

The investive .mh is powered by the combination of three 12AX7s and two EL84 power amp tubes.

The Invective head has been one of the most in-demand high-gain amps on the market. Developed in a collaboration with the talented Misha Mansoor this was one of the first amps designed to be a perfect match for modern pedalboard-centric players. The best-in-class clean channel is the perfect launchpad for your pedal-generated sound. The high-gain channel in the Invective is based on the legendary 6505™, known as the amp that created today's hard rock sound. Now you can get this versatile performance amp in a mini head form factor.

03618470



Power attenuator adjusts the output from 20 watts down to as low as one watt.

Speaker defeat switch allows for silent recording.

Microphone Simulated Direct Interface (MSDI) for recording or performing without a cabinet.

USB output with advanced speaker simulation allows for great-sounding and easy home recording.

LEARN MORE AT [PEAVEY.COM/INVECTIVE](https://www.peavey.com/invective) ►

# CLASSIC<sup>®</sup> SERIES

## Timeless Classics From An American Original

Quite possibly, no other amplifier bearing the Peavey name is nearer to Hartley Peavey's heart than the Classic<sup>®</sup> Series. Born where blues and rock & roll began, these amplifiers come alive with vintage vibes, versatility and a timeless design from one of America's enduring musical innovators. The Classic<sup>®</sup> Series is the sound of Mississippi Delta soul and is as close to the source as you'll ever get.

You will find Classic<sup>®</sup> amps on stages around the world. Classic players come from many different genres, what they all have in common is great tone.

### #classicplayer

These gig-perfect combos capture that authentic vintage tone. The potent combination of three 12AX7s up front and four EL84 power amp tubes are the heart of these amps. Each includes normal and bright inputs, 3-band passive EQ, and presence control providing versatility so you can dial in your favorite classic tone. These great amps even include a genuine Spring Reverb with level control. Plug in, turn up and go Classic<sup>®</sup>.

## EL84 OUTPUT TUBES

The Classic<sup>®</sup> Series distinguishes itself from most similar amps thanks to the use of EL84 output tubes. The EL84 is known for delivering more gain and breaking more quickly, the exact sonic and dynamic performance attributes that players today are seeking. For the Classic<sup>®</sup> Series the EL84 output tubes are paired with 12AX7 tubes, for that perfect tone. Add features like 3-band EQ, footswitchable dual channels, footswitchable boost, reverb, and a footswitchable effects loop, and you have one of the most versatile amplifiers on the market. Classic looks, classic tone. Get it all with Peavey Classic<sup>®</sup>.



## CELESTION

The Classic<sup>®</sup> Series amplifiers are outfitted with Celestion speakers.

# Classic® 30 112

This combo is the perfect balance between portability and power. The Classic® 30 112 is a popular stage and studio amp thanks to its tone and versatility. Its 30 watts power a Celestion® Midnight 60 12" speaker.

03602930



LEARN MORE AT [PEAVEY.COM/CLASSIC](https://www.peavey.com/classic) ►

# CLASSIC<sup>®</sup> SERIES



## CELESTION

The selection of a 15" Celestion® Fullback speaker in the Delta Blues™ 115 has a big, deep voice, effortlessly delivering smooth and expressive tones. The larger cone extends the low end response while retaining classic, harmonically complex and finely detailed mid-range tones.

## DELTA BLUES<sup>®</sup> 115

Classic style, classic tone and modern versatility. If the blues is your way of life, one of these two Delta Blues® amps is built for you. 30 classic all-tube watts are way louder than solid state and modern flexibility comes from a tremolo with speed and intensity controls, pre-and post-gain controls on the lead channel, 3-band passive EQ, a boost switch, external speaker jack, and an effects loop. Jamming or gigging, these babies can hold down your end of the sound.

Features Celestion® Fullback speakers with a single 15" Celestion® speaker.

Delta Blues® 115  
03327810



Delta Blues® controls

LEARN MORE AT [PEAVEY.COM/CLASSIC](http://PEAVEY.COM/CLASSIC) ►

# CLASSIC® EXTENSION CABS

Peavey's Classic® Extension Cabs come complete with 18mm plywood construction with metal corners and rubber feet. The 212 cab is designed with two sets of feet and an adjustable logo mount so that it can stand on either end.

## 112-C Tweed

16 ohms

One Celestion 12" Vintage 30 speaker

03614680

## 212-C Tweed

16 ohms/8 ohms side/stereo

Stereo/Mono input cup

One Celestion 12" Vintage 30 speaker

One Celestion 12" G12T-75 speaker

03615000



## Convertible open/closed back

Get that open-back sound on both the tweed C Series and black 6 Series cabs with Peavey's easily removable back panel.

### CELESTION

Peavey® Extension Cabinets are outfitted with Celestion speakers.



# CLASSIC<sup>®</sup> SERIES

## Classic<sup>®</sup> 20 MH

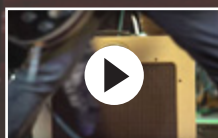
Revered by blues, country and rock players alike, Peavey Classic amps span the tonal landscape from vintage to contemporary with ease, and the Classic 20 MH provides that tone in a highly portable package.

The all-tube, 20-Watt Classic<sup>®</sup> 20 MH is powered by two EL84 power tubes and 3 12AX7/ECC83 preamp tubes. It has two channels that follow the same gain structure and voicing of the Peavey Classic<sup>®</sup> series amps for pure and versatile tone. The channels share a three-band EQ, lush reverb and an effects loop. The channels, effects loop and reverb are all footswitchable, footswitch included.



Peavey's TSI tube monitoring alerts players of power tube status, and in the event of a necessary tube replacement, identifies which tube needs to be replaced. Rear panel features such as a Microphone Simulated Direct Interface (MSDI) with XLR output and USB out, speaker defeat switch and 3 position power attenuator switch make the Classic 20 MH mini head perfect for studio environments. Headphone output.

03614150



SEE & HEAR IT ON [PEAVEY.COM/CLASSIC](https://www.peavey.com/classic) ►



The Classic® 20 MH is powered by the combination of three 12AX7s and two EL84 power amp tubes.

Power attenuator adjusts the output from 20 watts down to as low as one watt.

Speaker defeat switch allows for silent recording.

Microphone Simulated Direct Interface (MSDI) for recording or performing without a cabinet.

USB output with advanced speaker simulation allows for great-sounding and easy home recording.



## Integrated Mic/Cabinet Simulator

With Peavey's exclusive MSDI technology you get that perfectly mic'd up tone with no cabinet or live amp volume. Originally developed in collaboration with Joe Satriani, MSDI is perfect for recording or live performance where low stage volume is needed.

**VYPYR<sup>®</sup>**  
**SERIES**

# Peavey's \$40,000 Amp For Under \$200




LEARN MORE AT [PEAVEY.COM/VYPYR](https://www.peavey.com/vypyr) ►

# VYPYR® X

It would take many years and lots of dough to acquire the dozens of amps, stomp boxes and instrument models that come in the new VYPYR® X amp. Effortlessly switch from one great amp model to another, select the exact effects that you want and dial in that perfect tone.

Use the new VYPYR® X app to control the amp, customize your settings, or share sounds with your friends. With the VYPYR® X, you can dial in the tones you need to Play Any Style on Any Stage.

- **Select from 36 unique built-in amps**
- **Switch between 12 premium stomp boxes**
- **Get best-in-class analog distortion**
- **Plug in an acoustic guitar, electric or bass**
- **Remote control with app and  Bluetooth® (X2 & X3)**



VYPYR® X2  
03617750

VYPYR® X3  
03617810

VYPYR® X1  
03617730



# VYPYR® SERIES



## VYPYR® X3

- TransTube® analog distortion
- 100 Watts RMS
- Over 400 amp accessible presets
- 36 on-board amp models including 6 acoustic and 6 bass amp models
- 26 total on-board amp accessible effects
- 12" custom-voiced heavy-duty speaker
- 10 instrument models
- iOS app available
- 12 amp accessible stompbox effects with dual parameter control
- On-board looper with optional Sanpera™ footswitch

VYPYR® X3 Guitar Modeling Amp  
03617810



## Analog Distortion

Each VYPYR X is equipped with Peavey's exclusive TransTube® technology. This true analog distortion not only sounds better, it leaves the amplifier's processing power dedicated to the effects, allowing the VYPYR X to run up to 5 effects simultaneously. When playing live nothing "cuts through the mix" like a VYPYR.

## Instrument Models

Make your electric sound like an acoustic or bass guitar, or on the VYPYR X2 and X3 up to 10 different instrument models.

## Packed with Amplifiers & Effects

Purchased individually the amps and effects in the VYPYR amp could cost a fortune. Our VYPYR series is an unbelievable value. VYPYRs use the same technology found in stompbox pedals that cost almost as much as a VYPYR for a single effect.

## Amp Accessible Operation

Many competitors claim their amps have multiple effects and models, but most of them are not fully functional without the use of external software. With the VYPYR X you can access ANY of the features of the amp, right from the front of the amp itself or with the use of a footswitch in the case of the looper.

## VYPYR® X APP



## VYPYR® Awards

The VYPYR® X is part of a long lineage of great VYPYR® amps



- 2020 Music Inc. Product Excellence Award, VYPYR VIP Series Amps
- 2015 Music & Sound Retailer Award, Product of the Year, VYPYR® Pro 100
- 2013 Bass Gear Best of Show, VYPYR® VIP
- 2013 NAMM Best In Show "Gotta Stock It", VYPYR® VIP
- 2010 MMR Dealers' Choice Award, Amp Line of the Year, Vypyr®
- 2010 MIPA (Musikmesse International Press Award), Best Guitar Amp Combo, Vypyr® 15
- 2009 MMR Dealers' Choice Award, Amp Line of the Year, Vypyr®
- 2009 Guitar World Gold Award for Overall Value, Vypyr® 75, August 2009
- 2008 Music & Sound Retailer Award, Instrument Amp of the Year, Vypyr®
- 2008 Music & Sound Retailer Award, Product of the Year, Vypyr®
- 2008 MMR Dealers' Choice Award, Amplifier Line of the Year, Vypyr®

LEARN MORE AT [PEAVEY.COM/VYPYR](http://PEAVEY.COM/VYPYR) ►

# VYPYR® SERIES

## VYPYR® X2

- TransTube® analog distortion
- 40 Watts RMS
- 36 on-board amp models including 6 acoustic and 6 bass amp models
- 26 total on-board amp accessible effects
- 12" custom-voiced heavy-duty speaker
- 16 user assignable presets
- 10 instrument models
- iOS app available
- 12 amp accessible stompbox effects with dual parameter control
- On-board looper with optional Sanpera™ footswitch

VYPYR® X2 Guitar Modeling Amp  
03617750



## VYPYR® X1

- TransTube® analog distortion
- 20 Watts RMS
- 36 on-board amp models including 6 acoustic and 6 bass amp models
- 16 user assignable presets
- 2 instrument models
- 12 stompbox effects with dual parameter control
- 8" custom-voiced heavy-duty speaker
- On-board looper with optional Sanpera™ footswitch

VYPYR® X1 Guitar Modeling Amp  
03617730



LEARN MORE AT [PEAVEY.COM/VYPYR](http://PEAVEY.COM/VYPYR) ►

# SANPERA® FOOTSWITCHES

The Sanpera® footswitches are housed in roadworthy and rugged cast-metal casing and feature high-quality metal switches.

## Sanpera® I

The Sanpera® I allows control over wah, volume, access presets, turn on and off effects, and engage looper, a must have for any VYPYR amplifier.

03017440



## Sanpera® II

The Sanpera® II controller features dual, assignable expression pedals with toe switches, dedicated tap tempo and looper control, as well as footswitches for accessing presets, preamp "stompbox" effects, post-amp "rack" effects, delay, and reverb.

03017550



SEE THE  
VYPYR X SERIES OVERVIEW

# GUITAR AMPS

## The Amp That Defined The Nashville Pedal Steel Sound

### NASHVILLE™ 112

#### THE BENCHMARK FOR STEEL-GUITAR AMPLIFIERS

Engineered for both performances and recording sessions, the Nashville™ 112 provides 80 watts of power and a 12" Blue Marvel® speaker specially voiced for steel. After nearly four decades, the Peavey Nashville is still the standard for country music's top steel players.

00459770

- Portable and lightweight
- Compact size, all-plywood enclosure
- DDT™ compression speaker protection
- Pre-EQ patch send return for volume pedal patch
- Modified active low, mid, mid/shift, high and presence EQ
- Footswitchable effects and reverb and post-EQ effects loop
- Headphone input jack that defeats internal speaker for quiet rehearsal



CONNECT WITH



# #PEAVEY

Tag us in shots of you and your Peavey gear



[facebook.com/peaveyelectronics](https://facebook.com/peaveyelectronics)



[instagram.com/peaveyelectronics](https://instagram.com/peaveyelectronics)



[youtube.com/peaveyelectronics](https://youtube.com/peaveyelectronics)



[twitter.com/peavey](https://twitter.com/peavey)

## PEAVEY.COM

ELECTRIC GUITARS

# HP2<sup>®</sup> GUITARS

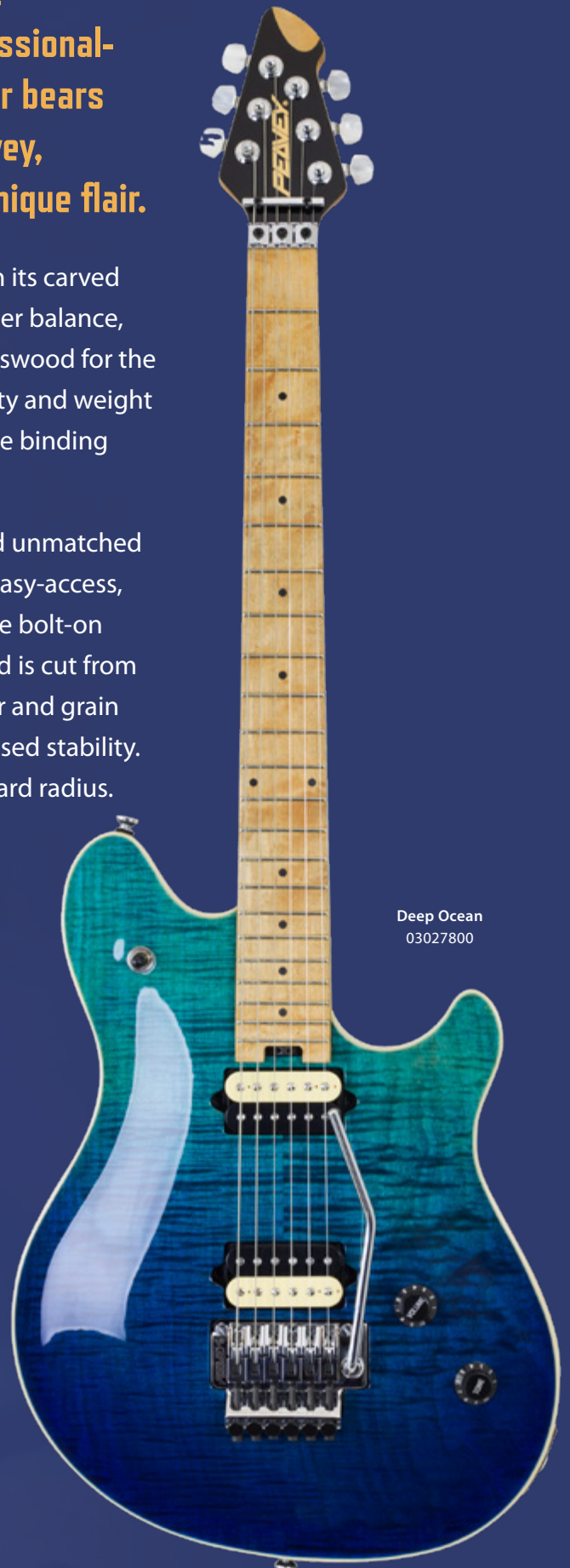


**The Peavey HP 2® is constructed with leading-edge technology, traditional handcrafted methods, professional-quality upgrades and customizations. When a guitar bears the initials of Peavey founder and CEO Hartley Peavey, players can expect an iconic design with its own unique flair.**

While the esthetic is classic, the HP 2® undoubtedly stands out with its carved top and offset, asymmetrical body design that offers comfort, proper balance, and maximum playing ease. Maple was chosen for the top and basswood for the back. We selected these hardwoods not only for their natural beauty and weight characteristics, but also for their specific tonal qualities. Cream edge binding accents the body.

At the select birdseye maple neck and fingerboard, players will find unmatched stability and playability. Dual graphite reinforcement bars and an easy-access, adjustable steel torsion rod provide additional strength, as does the bolt-on construction with contoured neck heel. The oil-finished fingerboard is cut from the same piece of wood as the single-piece neck, keeping the color and grain patterns consistent. The stress-relieved lamination also adds increased stability. The HP 2® has a 25.5" scale length, 22 jumbo frets and 15" fingerboard radius. The 10-degree tilt-back headstock has a 3+3 tuning machine configuration featuring Schaller® tuning machines with pearloid buttons. The chrome-plated hardware finish completes the look.

The HP 2's® construction and electronics work in harmony. Two custom-wound Peavey humbucking pickups supply optimal output and tonal response. They're made using a two-step wax-dipping process that provides ultra-low noise operation and resistance to microphone feedback. The pickups are mounted directly to the body, further reducing feedback at high volume levels and enhancing response. A Switchcraft® 3-way toggle switch allows selection of pickups in up, center and down configurations. Players will also find a Peavey/ Floyd Rose® licensed, double-locking tremolo assembly to complete the guitar. Finishing off the guitar are two push-pull knobs for volume and tone, with the ability to split the pickups individually.



Deep Ocean  
03027800

[LEARN MORE AT PEAVEY.COM/HP2](https://www.peavey.com/hp2) ►

ELECTRIC GUITARS

**HP2<sup>®</sup>**  
**GUITARS**



# HP 2<sup>®</sup> Features

Ten degree tilt-back headstock  
with unique scoop design

Schaller<sup>®</sup> tuning machines  
with pearloid buttons

Staggered ergonomic tuning machine  
placement with straight string pull

Locking topnut

25.5 inch scale Graphite-reinforced  
oil-finished neck and fingerboard

Switchcraft<sup>®</sup> 3-way toggle switch  
Up: Neck  
Center: Both  
Down: Bridge

Peavey design humbucking  
pickups mounted directly to body

Flame-maple/basswood body  
construction with carved top

Master volume

Master tone

Push pull coil tap capability

Cream edge binding

Sculpted body/neck heel

Easy-access torsion-rod adjustment

Premium hardshell case included

Peavey licensed Floyd Rose<sup>®</sup> tremolo



Black  
03027750

LEARN MORE AT [PEAVEY.COM/HP2](https://www.peavey.com/hp2) ►

ELECTRIC GUITARS

# HP2<sup>®</sup> GUITARS

Moonburst  
03027830

Tigereye  
03027790





LEARN MORE AT [PEAVEY.COM/HP2](https://www.peavey.com/hp2) ►

# RAPTOR<sup>®</sup> GUITARS

## Classic Looks with Spot-on Tone!

A guitar is about so much more than the wood, the finish, and the parts – at least a good guitar is. A good guitar is about how it makes you feel as well as how it makes you sound. The Raptor guitars have an old soul; inspired by vintage instruments from the golden age of guitar building, these harken back to a simpler time. Each Raptor is crafted to inspire you, to deliver tone and sustain that will bring out your creativity and transport you to another time and place. Go ahead – strap one on, grab your favorite pick, and play for a while.



## Peavey<sup>®</sup> Powerplate<sup>™</sup>

The Powerplate is a metal plate that is embedded into the back of the headstock, which evens out the volume of each string and increases instrument sustain.

# Raptor® Custom Guitars

Peavey® PowerPlate™ increases sustain

Rosewood or Maple fingerboard

Hard Maple neck

25.5" scale

22 2.3mm frets

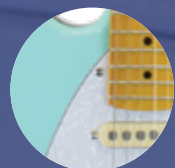
Three Peavey USA design single coil pickups with 6mm large pole pieces

Dual adjustable truss rod

Basswood body

Vintage-style steel bridge

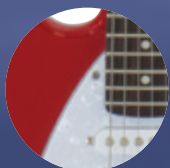
LEARN MORE AT [PEAVEY.COM/RAPTOR](http://PEAVEY.COM/RAPTOR) ►



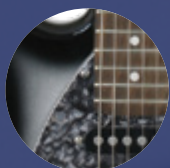
Marine Green 03026660



Black 03018150



Red 03026650



Silverburst 03018180



Columbia Blue 03026670

Sunburst 00489440



Black 00489450



Cherryburst 03018130



Ivory 03018120



Red 03018140

# Raptor® Plus Guitars

25.5" scale

12" neck radius

Solid body construction with excellent ergonomics and balance

Wide top pole piece single coil pickups for bigger string window with more focus

Tremolo bridge

Peavey six-in-a-line headstock with ergonomic tuner placement and string pull

5-way pickup selector, hum-cancelling in second and fourth position

Dual action torsion rod

ACOUSTIC GUITARS

# DELTA WOODS™ SERIES





## DW™ Series Acoustic and Acoustic-Electric Guitars

Peavey returns to the roots of an American tradition with the introduction of the Delta Woods™ acoustic guitars. The DW™ series guitars are designed to be the best-sounding, easiest-playing, full-size acoustic guitars Peavey has ever built. The three new models — two acoustic, one acoustic-electric — are made using only high-end materials and a minimalistic satin finish, resulting in excellent tone and volume. Whether players are casually strumming a traditional 12-bar blues riff or exercising modern fingerpicking techniques, Peavey's Delta Woods acoustic guitars deliver rich tonal resonance and premium playability.

The three Delta Woods models, the DW-1, DW-2, and DW-2 CE, all offer a gorgeous spruce top with mahogany back and sides for premium tone. The most notable material difference among these models is that the DW-2 and DW-2 CE both offer a solid spruce top, which offers incomparable resonance and sustain. On each DW series model, hand-carved bracing provides even tone distribution throughout each guitar's range. Each model also has a bound fingerboard and body along with a fanciful rosette, rosewood fretboard, and pearloid dot inlays for a premium look and feel.

[LEARN MORE AT PEAVEY.COM/DW](https://www.peavey.com/dw) ►

ACOUSTIC GUITARS

# DELTA WOODS™ SERIES



# DW-2 CE™

## Solid Top Cutaway Acoustic-Electric Guitar

The DW-2 CE is a series standout, offering both a cutaway for easy access to upper-register strings as well as custom electronics. The 3-band EQ and Presence control provide tone-shaping and easy connection to any amplifier or audio system, while the on-board chromatic tuner helps to ensure the guitar's stage-readiness.

- Gorgeous solid spruce top with mahogany back and sides for premium tone
- Cutaway for easy access to upper register
- Custom electronics with 3-band EQ and Presence provide tone shaping and easy connection to any amplifier or audio system
- On-board chromatic tuner
- Hand-carved bracing provides even tone distribution throughout its range
- Sealed tuning machines provide precise and accurate tuning and keep the guitar in tune
- Compensated saddle for perfect intonation
- Rosewood fretboard for premium look and feel
- Premium design using bound fingerboard, body and fanciful rosette
- Pre-installed strap buttons
- Wood truss rod cover
- Dual action truss rod ensures a lifetime of playability

DW-2 CE Solid Top Cutaway w/ELE  
03620300

DW-2 CE Solid Top Cutaway w/ELE & Case  
03620210



[LEARN MORE AT PEAVEY.COM/DW](https://www.peavey.com/dw) ►

# DELTA WOODS™ SERIES



## DW-2™

### Solid Top Dreadnought Acoustic Guitar

- Gorgeous solid spruce top with mahogany back and sides for premium tone
- Hand-carved bracing provides even tone distribution throughout its range
- Sealed tuning machines provide precise and accurate tuning and keep the guitar in tune
- Compensated saddle for perfect intonation
- Rosewood fretboard for premium look and feel
- Premium design using bound fingerboard, body and fanciful rosette
- Pre-installed strap buttons
- Wood truss rod cover
- Dual action truss rod ensures a lifetime of playability

DW-2 Solid Top Dreadnought  
0362029

DW-2 Solid Top Dreadnought with Case  
0362020



LEARN MORE AT [PEAVEY.COM/DW](https://www.peavey.com/dw) ►

## DW-1™ Acoustic Guitar

- Gorgeous durable spruce top with mahogany back and sides for premium tone
- Hand-carved bracing provides even tone distribution throughout its range
- Sealed tuning machines provide precise and accurate tuning and keep the guitar in tune
- Compensated saddle for perfect intonation
- Premium design using bound fingerboard, body and fanciful rosette
- Rosewood fretboard for premium look and feel
- Pre-installed strap buttons
- Wood truss rod cover
- Dual action truss rod ensures a lifetime of playability

DW-1 Acoustic Guitar with Bag  
0362019



ACOUSTIC GUITARS

# DELTA WOODS<sup>™</sup> SERIES



## CNS™ Series Classical Guitars

The Delta Woods CNS guitars are simple yet strong with an okume neck supported by a dual-action truss rod. While not commonly used in nylon string guitars, Peavey goes the extra mile by including one to ensure durability and performance. The traditional C-shape, flat radius, and 19-fret rosewood fingerboard provide the tactile familiarity classical-style players expect. The neck design is complemented by the reliable ABS nut and saddle and sturdy rosewood bridge. At the slotted headstock, elegant gold tuning machines with mica buttons ensure tuning stability. Strap buttons are included on each model to accommodate playing comfort.



LEARN MORE AT [PEAVEY.COM/DW](https://www.peavey.com/dw) ►

ACOUSTIC GUITARS

# DELTA WOODS™ SERIES



# CNS CE™

## Classical Nylon String Guitar with Electronics

The cutaway CNS-CE stands out as the lone acoustic-electric of the series. The 3-band EQ and Presence control provide tone-shaping and easy connection to any amplifier or audio system, while the on-board chromatic tuner helps to ensure the guitar's stage-readiness.

Each Delta Woods CNS guitar starts with a classical body shape and spruce top. The CNS-CE uses mahogany for the back and sides. Hand-carved body bracing promotes the natural resonance of the tone woods, while 5-ply black-white binding provides an extra touch of sophistication.

- Gorgeous Spruce top with mahogany back and sides for premium tone
- Cutaway for easy access to upper register
- Custom electronics with 3-band EQ and Presence provide tone shaping and easy connection to any amplifier or audio system
- On-board chromatic tuner
- Hand-carved bracing provides even tone distribution throughout its range
- Elegant gold tuning machines with mica buttons provide precise and accurate tuning
- Rosewood fretboard for premium look and feel
- Premium design using bound fingerboard, body and fanciful rosette
- Pre-installed strap buttons
- Dual action truss rod ensures a lifetime of playability
- Compensated saddle for perfect intonation
- Wood truss rod cover

CNS-CE Classical Nylon String w/ELE  
03620330

[LEARN MORE AT PEAVEY.COM/DW](https://www.peavey.com/dw) ►



# DELTA WOODS™ SERIES



LEARN MORE AT [PEAVEY.COM/DW](https://www.peavey.com/dw) ►



## CNS-2™

### Classical Nylon String Guitar

- Gorgeous Spruce top with mahogany back and sides for premium tone
- Hand-carved bracing provides even tone distribution throughout its range
- Elegant gold tuning machines with mica buttons provide precise and accurate tuning
- Rosewood fretboard for premium look and feel
- Premium design using bound fingerboard, body and fanciful rosette
- Pre-installed strap buttons
- Dual action truss rod ensures a lifetime of playability
- Compensated saddle for perfect intonation
- Wood truss rod cover

CNS-2 Classical Nylon String  
03620320



# CNS-1™

## Classical Nylon String Guitar

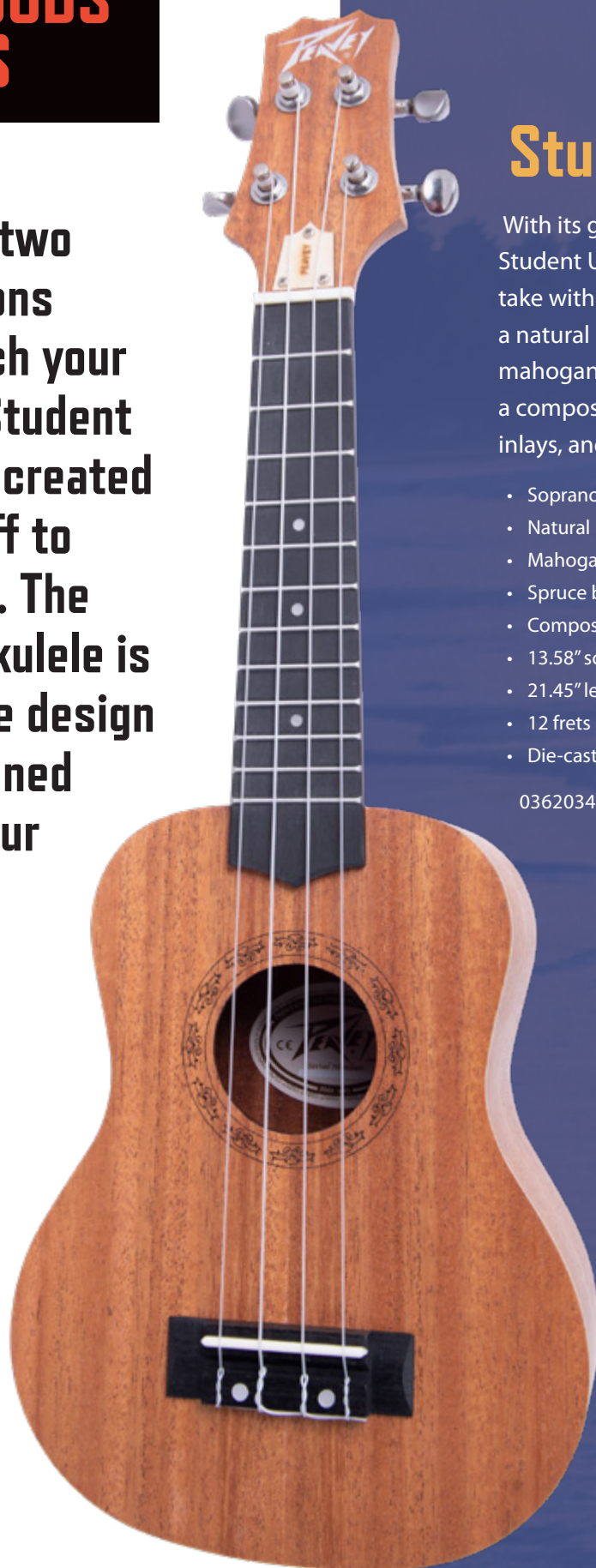
- Gorgeous Spruce top with linden back and sides for premium tone
- Hand-carved bracing provides even tone distribution throughout its range
- Elegant gold tuning machines with mica buttons provide precise and accurate tuning
- Rosewood fretboard for premium look and feel
- Premium design using bound fingerboard, body and fanciful rosette
- Pre-installed strap buttons
- Dual action truss rod ensures a lifetime of playability

CNS-1 Classical Nylon String  
03620310



# DELTA WOODS™ UKULELES

**Select from two ukulele options to best match your needs. Our Student Ukulele was created to get you off to a good start. The Composer Ukulele is an innovative design that is designed to inspire your best. Pick your ukulele and enjoy.**



## Student Ukulele

With its great tone and compact size, the Delta Woods Student Ukulele is a musical companion you'll want to take with you everywhere. The Soprano body features a natural matte finish with spruce bracing and a mahogany top, back and sides. The Okume neck features a composite fingerboard and bridge, acrylic white dot inlays, and die-cast chrome tuning machines.

- Soprano body shape
- Natural matte finish
- Mahogany top, back and sides
- Spruce body bracing
- Composite fingerboard and bridge
- 13.58" scale
- 21.45" length
- 12 frets
- Die-cast chrome machine heads

03620340



# Composer Ukulele

Using our unique offset soundhole, the Composer Ukulele has unrivaled enhanced low-end response. The body features a natural Spruce top with Sapele back and sides. The neck features a standard "C" Shape Sapele neck with a Rosewood fingerboard, and black chrome die-cast machine heads. With its great tone and compact size, the Composer Ukulele will be a musical companion you'll want to take with you everywhere.

- Natural Spruce top
- Sapele back & sides
- Sapele neck
- Rosewood fingerboard
- Rosewood bridge
- Black chrome die-cast machine heads
- 18 frets
- Exclusive wing vent technology

03016310



## Side Sound Hole



# KB<sup>®</sup> SERIES

## KB<sup>®</sup> Series Multi-Purpose Portable Amplifiers

### Power. Versatility. Killer Audio for Keyboards and much more.

The KB<sup>®</sup> Series gives musicians the power and reliability they need with a feature set that brings everything together in one convenient package. KB amps do much more than just amplify keyboards – they're complete sound systems for your band rehearsals or live performances. With up to five independent channels, you can run your keyboard plus a vocal mic, guitar, bass, drum machine, backing tracks, sampler – the possibilities are endless.

Heavy-duty  
pop-up  
handle

KB4



### Roll in, Plug in, Turn on!

The KB<sup>®</sup> 4 is designed to be a great personal PA system. It features separate inputs on each channel and can easily handle a variety of instruments and devices including: voice (microphones), keyboards, guitars, drum machines, and more, as well as amplify the music from your phone or other device. Thanks to the recessed wheels and heavy-duty pop-up handle you get a truly portable sound system.

### KB<sup>®</sup> 4

- 15" heavy-duty speaker and tweeter
- 4 channels with varied inputs to accommodate a wide variety of devices or instruments
- 75 watts/100 watts with external speaker
- Stereo mixer with 2-band EQ and main effects send/return
- Mic/Line channel with 3-band EQ and effects send/return

00573220

Built-in casters and handle  
for easy moving

KB4

The KB® Series  
is great for:



and more!



### KB® 1

- Two separate channels
- 2-band EQ on each channel
- 8" extended range speaker
- Headphone out
- 20 watts of clean Peavey power

00573100



### KB® 2

- Four separate channels
- 2-band EQ on Channels 1 & 2, Channel 3 has 3-band EQ
- Versatile input options
- Specially designed 10" coax speaker
- Headphone out with level control
- Biamped 45 watts and 12 watts

00573140



### KB® 3

- Four separate channels
- 2-band EQ on Channels 1 & 2, Channel 3 has 3-band EQ
- Versatile input options
- 12" heavy-duty speaker with tweeter
- Headphone out with level control
- 60 watts of clean Peavey power
- Extension cab capability extends power rating out to 80 watts

00573180

**MINIMEGA™**

# MiniMEGA™ Bass Amp

## Legendary Thump

Weighing in at only 9lbs and delivering 1,000 watts of power the MiniMEGA™ is the go-to portable amplifier for bassists of any style. The MiniMEGA™ delivers classic Peavey bass tones and reliability.



### Enhanced low-end by design with Kosmos®

Peavey's proprietary Kosmos® bass enhancement provides increased bass impact, while the exclusive psychoacoustic low-end enhancement adds bass without overburdening speakers – a testament to Peavey's technology-driven innovation.

The MiniMEGA™ also contains other modern features such as built-in compression and a 4-band EQ with semi-parametric mids. Dial in your tone with an effects loop, gain control, crunch button, tuner output and more. Plug in and see how big under 10 pounds can sound.

Pair the MiniMEGA™ with Peavey's PVH™ cabinets for a complete and professional bass system.

- 1,000 watts continuous into 4 ohms (1,500 watts burst power)
- DDT™ advanced speaker protection technology
- Built-in Kosmos® Bass Enhancement and Psychoacoustic Sub controls
- Built-in optical compressor with defeat switch
- 4-band EQ with Punch and Bright switches
- Gain control with crunch button
- Two twist-lock combo 1/4" outputs
- Mid controls feature semi-parametric control with narrow Q controls
- Tuner output
- Effects loop with bypass
- DI output with XLR & 1/4" outs
- DI pre-post switch, ground lift and Pad controls
- MIDI footswitch input
- User-definable control surface color lighting
- Foot-switchable crunch, compressor, Kosmos®, FX loop, and mute

03612360

[LEARN MORE AT PEAVEY.COM/MINIMEGA ►](https://www.peavey.com/minimega)

# MiniMAX™

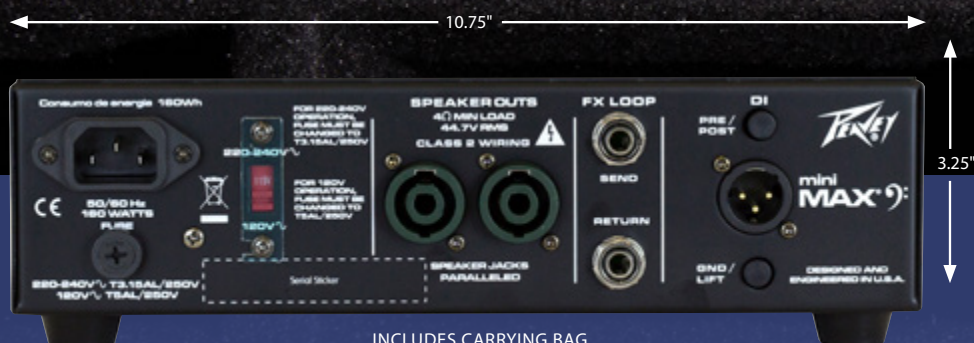
# MINIMAX™

## 600 Watts RMS of Powerful, Rich Low End

Featuring the rock-solid construction for which Peavey is known, the MiniMAX™ is built to withstand years of rigorous touring use. The convenient back panel of the amplifier has all the connectivity necessary to patch in effects or connect to a sound reinforcement system.



## 600 Watts • Under 6 Pounds



- 600 watts RMS into 4 ohms
- Built-in direct output with ground lift and pre/post switch
- 1/8" aux input; 1/8" phones output
- Two twist-lock combo 1/4" outputs
- Built-in effects loop
- Active & Passive inputs.

03612300

With DDT™ speaker protection and Peavey's exclusive Psycho-acoustic low end enhancement that adds bass without overburdening speakers, the MiniMAX™ contains an impressive set of features and is available at a price accessible to today's working bassist.

The MiniMAX™ is capable of a huge array of tones and is adaptable to any live or studio setting. A 3-band EQ with Punch, Mid-shift, and Bright controls provides a multitude of tone-shaping options, while the built-in chromatic tuner allows for easy tuning on the fly. In addition, the MiniMAX™ pre-gain control with TransTube® gain boost adds a tube-like crunch to the sound.

The MiniMAX™ can be paired with Peavey's Headliner™ or PVH™ series of bass enclosures to complete a reliable and ultra lightweight professional bass system.

LEARN MORE AT [PEAVEY.COM/MINIMAX](http://PEAVEY.COM/MINIMAX) ►

BASS AMPLIFIERS & CABS

# MAX<sup>®</sup> SERIES



# MAX<sup>®</sup>

Created especially for performers, the MAX<sup>®</sup> collection has been thoughtfully designed with features that bring out your best at every gig. Enjoy MAX portability, flexibility, and sound.

## MAX Sound

From your most nuanced notes to chest rattling performances, the MAX<sup>®</sup> Series is ready. The built-in Kosmos<sup>®</sup>-C bass enhancement feature adds harmonics and subharmonics to give you maximum tone. Also included is an advanced version of our DDT<sup>™</sup> speaker protection technology. This clip-limiting tech is great for slapping and other loud playing scenarios.

## MAX Flexibility

Whether you are live on stage, recording, or rehearsing, the MAX<sup>®</sup> has the capabilities you need. Click on the bass-specific chromatic tuner for a quick tune up. Utilize the external speaker out or EFX loop to flex to your needs. The ultra-quiet DI output is perfect to allow you to connect with the P.A. system while retaining control and assuring a great tone.

## MAX Portability

Enjoy the best in class power-to-weight ratio. Our team carefully selected lightweight woods, utilized an efficient power amp, and tended to every design aspect to maximize portability.

## MAX You

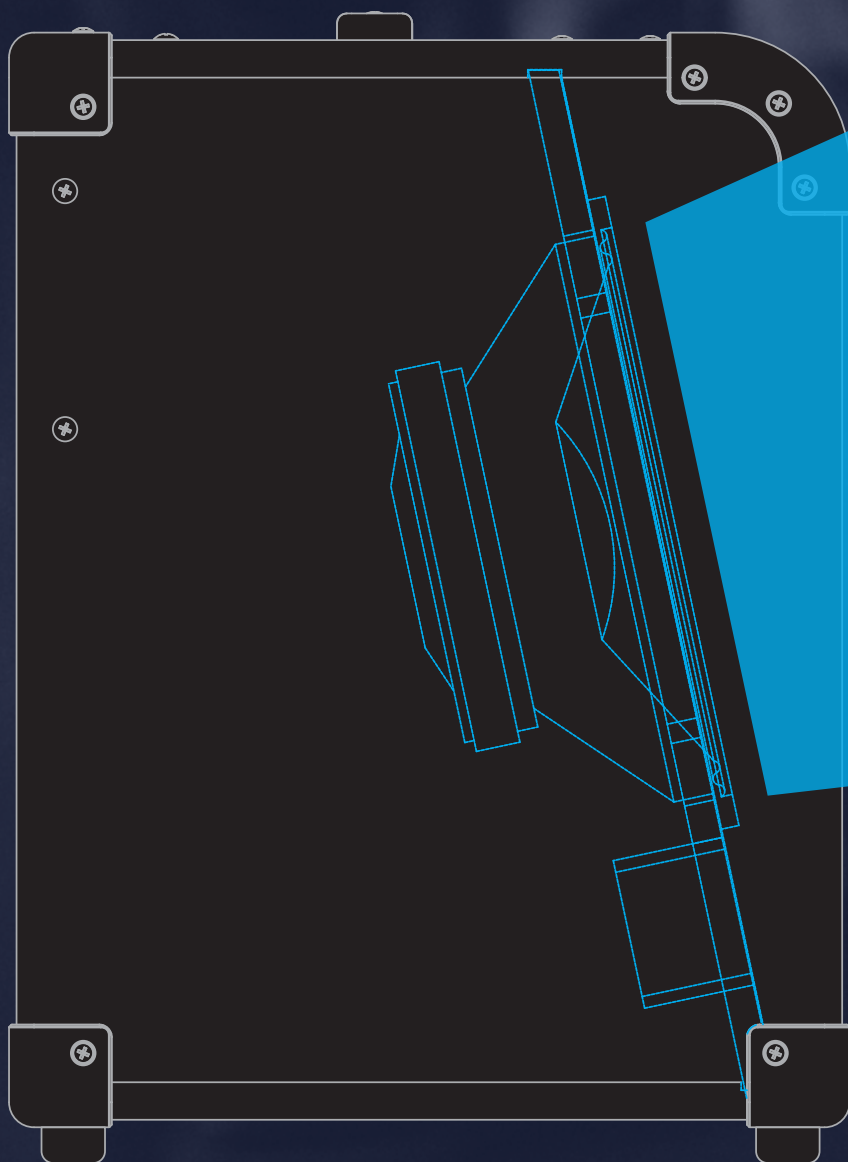
With MAX<sup>®</sup>, you will hear yourself loud and clear with no need to tilt your amp back. Thanks to the MAX<sup>®</sup>'s angled baffle design, the sound is directed right where you want it.

LEARN MORE AT [PEAVEY.COM/MAXBASS](https://www.peavey.com/maxbass) ►

# MAX<sup>®</sup> SERIES

## Angled Baffle Design

Hear yourself loud and clear, with no need for a kickback thanks to an exclusive angled baffle design. Instead of pointing the sound at your ankles, the speaker is pointed at the perfect angle, optimizing your ability to hear and the amp's projection.



LEARN MORE AT [PEAVEY.COM/MAXBASS](https://www.peavey.com/maxbass) ►



## MAX<sup>®</sup> 100

Speaker: 1x10"

Watts: 100

03616810



MAX<sup>®</sup>   
SERIES



MAX<sup>®</sup> 150

Speaker: 1x12"  
Watts: 150  
03616830



MAX<sup>®</sup> 250

Speaker: 1x15"  
Watts: 250  
03616850



MAX<sup>®</sup> 150



MAX<sup>®</sup> 250

# MAX<sup>®</sup> 208

The MAX<sup>®</sup> 208 portable bass combo is perfect for the on-the-go bass player. The unique form-factor is compact and easy to carry. With 200 watts of power going into two heavy-duty 8" speakers.

As with all of the MAX amps, the MAX 208 is feature packed. That starts with the design upgrade of an angled baffle that delivers the sound upward towards you and your audience. It also includes Peavey's DDT<sup>™</sup> speaker protection, Three-band EQ with Overdrive, Contour, Mid-Shift, Bright, and Kosmos-C low-end enhancement. Grab a MAX 208 and play where you want and sound great doing it.

03617410



**The MAX<sup>®</sup> 208 sounds great  
with upright bass**

[LEARN MORE AT PEAVEY.COM/MAXBASS](https://www.peavey.com/maxbass) ►



# TNT® AND TKO®



- Power Output (RMS): TNT® 115 600 watts maximum, TKO® 115 400 watts maximum, lightweight class D power
- One 15" speaker
- Tweeter
- EQ
- Shelving Controls High and Low
- Pre shape contour switch
- Bright switch
- Active/passive pickup switch
- Crunch switch: TNT® 115
- Compressor with defeat switch: TNT® 115
- Effects loop
- DDT® speaker protection
- Headphone output
- Convenient kick-back design
- Lit Peavey logo

## TKO® 115 400-Watt 1x15 Bass Amp Combo

03599510



# TNT® & TKO® Bass Combos

## The Legends Return

Since the introduction of the TNT® and TKO® more than 30 years ago, Peavey bass combos have become the standard in powerful, reliable bass amplification and one of the most successful bass amplifier lines in history. How did we do it? Simple. We listened to our customers and loaded the TNT and TKO with the features, cutting-edge technology and power that they needed. This tradition continues in the new TNT 115 and the TKO 115.

Looking for lightweight class D power (and lots of it)? The TNT 115 and TKO 115 have you covered. The TKO 115 pushes 400 watts, while the TNT delivers a staggering 600 watts. Where the competition uses off the shelf power amps and power supplies, Peavey designs proprietary class D amplifiers from scratch — specifically for bass amplifiers.

The TNT 115 and TKO 115 are loaded with such features as Bright and Contour switches, 7 band EQ, effects loop, proprietary DDT™ speaker protection, and a convenient kick-back design. The TNT 115 also features the footswitchable optical compressor, active/passive pickup switch, and a tube-style Crunch switch.



## TNT® 115

### 600-Watt 1x15 Bass Amp Combo

03599550



## Kick Back & Jam

Send your TNT or TKO bass signal directly to the house sound system from the builtin XLR direct interface, then tilt back your amp and use it as a personal monitor!

# MILESTONE® BASS GUITARS

Whole Notes Never  
Felt So Good



Understated simplicity is what makes the Milestone® a landmark achievement. Whether you fancy the broad landscapes of jazz, or the precision of metal, the pickup combination can fulfill all your needs. Merge the versatility of the electronics with the ergonomic body and 12" radius fretboard and you've got an instrument that will be comfortable in any environment. The integrated Powerplate™ adds mass to the headstock, changing the resonance to eliminate any dead spots on the fingerboard. Whole notes never felt so good.



Vintage Burst  
03018100



Ivory  
03018090



Natural  
03026680



Black  
03018480

## SPECS

Balanced, comfortable body styling with sculpted front and back, improved access neck joint

Balanced, comfortable body styling with sculpted front and back, improved access neck joint

One straight and one split single coil pickup

Equipped with Powerplate™, delivering added sustain and improved performance.

Dual-expanding truss rod

Stamped steel bridge

Chrome hardware

19-1 tuners

34" scale

## Peavey® Powerplate™

Increasing sustain and eliminating dead spots, the Powerplate enhances performance.

[LEARN MORE AT PEAVEY.COM/MILESTONE](https://www.peavey.com/milestone) ►







**PROVIDING THE PRO SOLUTION**

[TraceElliot.com](http://TraceElliot.com)

TRACE ELLIOT®

# TRACE ELLIOT® PRO SERIES



# 1200 watts of REAL power

Trace Elliot has been defining professional bass amplification for over 40 years. As the first company to focus solely on bass guitar, Trace has been dedicated to providing professional bass players the gear they need for any application. After the incredible success of the ELF line of portable compact amplifiers, Trace once again turns their focus to large venue environments. Recognizing the continued need for world-class bass amplification that can stand on any stage and be rugged enough to withstand the rigors of constant touring Trace Elliot created the TE-1200 bass amplifier and the Trace Elliot Pro 4x10 cabinet.



# TRACE ELLIOT® PRO SERIES

## TRACE ELLIOT® TE-1200 Bass Amplifier

The Trace Elliot TE-1200 bass amplifier head boasts 1200 watts of REAL power, capable of driving up to TWO Trace Pro cabinets per unit. Utilizing the amazing tone sculpted by our proprietary Multi-band Compressor and Pre-Shape control that Trace Elliot made famous, the TE-1200's tone is legendary and its power can handle any stage. Rear features such as low noise direct-out, power amp in and out (for multiple units) and the included rack ears and bag make this amp ready for the road out of the box.



- Gain control
- Built-in Lo-Band/ Hi-Band Compressors with defeat switch (footswitchable)
- Pre-shape switch for the classic Trace Elliot EQ curve (footswitchable)
- 4 band equalization
- EQ Pre/Post Compressor switch|Mute/Tune switch (footswitchable)
- Input Gain and Output Level controls
- Pre and Post balanced XLR outputs with Ground Lift
- Headphone output|Four button MIDI footswitch with 25-foot cable included
- Optional 1.5U rackmount kit included|Noiseless buffered effects loop with level switch (footswitchable)
- Preamp Output / Power Amp Input 1V(rms) master/slave loop|Buffered 1/4 tuner/dry feed jack
- MIDI In and Out jacks|USB Recording Output/Interface
- Dual Neutrik combination Speakon/phone speaker output jacks
- 4 Ohm minimum load
- Worldwide AC voltage selector

03618570

Dial in your sound with these dual compressor control. Includes defeat switch and is foot-switchable.

## 4 band equalization

EQ Pre/Post Compressor  
switch|Mute/Tune switch  
(foot-switchable)

Pre-shape switch for the classic Trace Elliot EQ curve (foot-switchable)

Lots of power and headroom to assure that you are ready for almost any gig.

## Pre and Post balanced XLR outputs with Ground Lift

Noiseless buffered  
effects loop with  
level switch  
(foot-switchable)

Buffered 1/4" tuner/dry feed

## USB Recording Output/Interface

## MIDI In and Out jacks

Dual Neutrik combination  
Speakon/phone speaker  
output jacks

Worldwide AC  
voltage selector



# TRACE ELLIOT® PRO SERIES

## TRACE ELLIOT® TE-1200 Bass Amplifier



- 4-button MIDI foot-switch with 25-foot cable included
- Padded gig bag (included)
- Rack-mount kit (included)





**John Taylor**

# TRACE ELLIOT® PRO SERIES

## TRACE ELLIOT® Pro 4x10 and 2x12 Cabinets

The Trace Pro 4x10 is one of the most sonically pleasing and road worthy cabinets ever built. Using a staggered 4-10 inch speaker design combined with a true compression driver, the Trace Elliot Pro 4x10 delivers astonishing power and performance handling well over 1000 Watts of true RMS power. Each cabinet is built using 15mm plywood construction covered in durable, weather-resistant twostage epoxy coating. Drivers are protected during transit with the 4x10's magnetically attached cover. Each cabinet comes with rubber feet for use in any orientation. Handles can be found on all four sides, and quality locking casters are included. Trace Pro cabinets are built with one thing in mind: "Any Style, Any Stage."

### Pro 4x10 Cab Includes 4 staggered 10" speakers with Neodymium drivers

- 8 Ohms; 1000W(rms) power handling capability (conservative)
- Trace Elliot HF compression tweeter
- Dual parallel Neutrik Speakon 1/4" combination input jacks
- Logo and foot/recesses on three sides allow for solid and attractive horizontal or vertical stacking
- Top recess to accommodate the new TE-1200 bass amp head
- Removable protective front panel with magnetic retainers
- Newly designed crossover with improved overload protection

0361959

### Pro 2x12 Cab

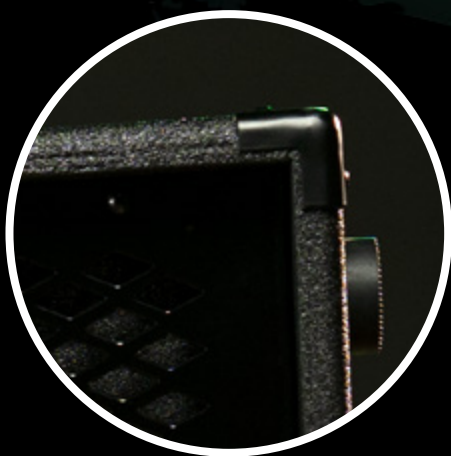
The Trace Pro 2x12 uses a custom coaxial 12" driver paired with its 12" woofer-only counterpart, this enclosure handles the complete sonic palette of the bass guitar. From thunderous lows to crisp, intelligent highs, this unique cabinet is ready for any stage.

03618210





- Top and side recessed handles for easier maneuverability
- Handles can be found on all four sides
- Road-ready locking casters



- Substantially reinforced 15mm Poplar plywood construction
- Extremely durable weatherproof two stage epoxy coating with metal corners

## Road Ready



- Removable protective front panel with magnetic retainers



**TRACE  
ELLIOT®  
ELF™**

## TRACE ELLIOT® ELF™

### The Best Selling Portable Bass Amp on the Market Today

Good things come in small packages, and now Trace Elliot® can add “small yet powerful” to that saying with the introduction of the ELF™ bass amplifier. Weighing just 1.6 pounds, this revolutionary amp is small enough to fit in your back pocket. The ELF's remarkable technology and size make it the most portable, gig-worthy amplifier ever made. It's an ideal solution for any bassist who is concerned with size and weight, but isn't willing to compromise on tone or performance.

# 200 WATTS • UNDER 2 POUNDS



**ACTUAL SIZE!**

## Features

- Extremely portable 1.60 lb (0.73Kg)
- Dimensions: W = 6.75" (17.1 cm) D = 4.10" (10.4 cm)  
H = 1.35" (3.4cm)
- 200W continuous into 4 ohms / 130W continuous into 8 ohms
- Wide range input gain control with signal level indicator
- 3-band rotary equalizer that emulates the response of classic Trace Elliot multi-band graphic EQ filters
- Ultra-high preamp input impedance (>10meg ohms) for maximum sensitivity when using passive pickups
- Post EQ balanced XLR DI output with ground lift for sending classic Trace Elliot tone to a mixing console or recording device
- 1/4" (6.35mm) headphone output for quiet practice
- Carry bag included

03615760

# ELF™



# TRACE ELLIOT® Big cabinet sound in a small package!

## CABS



### Trace Elliot® 1x10 Cab

- Angled baffle
- One 10" neodymium driver
- 300W (rms) power handling
- 8 Ohms

03616930



### Trace Elliot® 2x8 Cab

- Pristine full-range bass reproduction
- Two 8" Ultra Premium Italian designed speakers
- 400W (rms) power handling
- 8 Ohms

03616940



PHOTO: SACHA LECCA, ROLLING STONE

"My Trace Elliot ELF 200W Micro Bass Guitar Amp Head and stack of four 2x8" ELF Cabs have been an absolute game changer for my life on the road.

To be able to get such a huge clean sound without having to have a huge 8x10 taking up all the space in the van really feels like the next level. I brought this stack on the entire Foo Fighters tour and it completely rocked the big stages."

**Isaiah Radkey**



**The ELF™ takes the lightweight/small size paradigm to a whole new level.**

# TRACE ELLIOT® ELF™ COMBOS

## Compact – Portable – Powerful

There are many small bass amplifiers, but NONE that sound like their full-sized counterparts. For the tone of a big bass amp that you can carry in one hand, the Trace ELF Combos take the finest speaker components on the road in a portable package.

These Combos are purpose-built to amplify your skills and the tone of your instrument. Ultimate tone, ultimate portability, ultimate Trace!



## Gig-Ready Ultra Quiet DI

The integrated Trace DI is ultra quiet, allowing you to easily send your optimized tone to the house. Also perfect for recording applications.

## Expandable - Flexible

Got a big gig? Take an ELF Combo and a 2x8 or 1x10 speaker cab and have more than enough power.



**Big Rig 200 Watt Sound  
You Can Carry In One Hand**



## Trace Elliot® 1X8 ELF™ COMBO

03618500

## Trace Elliot® 1X10 ELF™ COMBO

03618520



**ACTUAL SIZE!**



TraceElliot.com

# TRACE ELLIOT® TRANSIT™

## TRACE ELLIOT® TRANSIT™ A Acoustic Pre-Amp & Effects

The Transit™ A preamp pedal includes the right features for a professional acoustic guitar player without over burdening the user with extra controls that hinder quick and easy tweaking. The built in Compression, Notch Filter, Pre-shape and simple EQ controls ensure great basic tone, while the user-definable Boost, Chorus, Delay and Reverb offer all the tools necessary for artistic expression. The back-lit control panel becomes the chromatic tuner for accurate tuning. Built-in Pre and Post XLR balanced output, dry output and headphone output give the user the ins and outs they need for the best live coverage.



**The perfect solution for the  
gigging professional who  
wants consistent acoustic  
guitar tone night after night!**



## Features

- Color coordinated backlit controls
- Built-in chromatic tuner
- Piezo button increases input impedance
- User definable boost switch
- Chorus with simple one knob operation
- Delay with Level, Feedback and Tap-Tempo
- Pre-shape switch for classic Trace Acoustic EQ curve
- Reverb with simple one knob operation
- PPhase reverse switch to help eliminate feedback
- 3 band active EQ
- Notch filter
- Input Gain and Output Level controls
- Stereo outputs and Dry output
- Pre and Post balanced XLR outputs with Ground Lift
- Aux input
- Phones output
- Carry bag included

03616150

Even more control  
of Trace Elliot's  
professional-grade tone —  
now at your fingertips!

## TRACE ELLIOT® TRANSIT™ B Bass Pre-Amp & Effects

The Transit™ B pedal is a professional grade preamp for the discerning bassist. Built-in tools for tone shaping like Pre-shape, 5 band semi-parametric EQ and dual band Compressor are easy to use and easy to tweak on the fly. Features like Drive with blend control and built-in bass enhancement add to the tonal options available. The back-lit control panel becomes the chromatic tuner for accurate tuning. Built-in Pre and Post XLR balanced output, dry output and headphone output give the user the ins and outs they need.



## Features

- Color coordinated backlit controls
- Passive/Active switch
- Pre-shape switch for the classic Trace Elliot EQ curve
- Drive control with blend knob, foot-switchable
- 5 band semi-parametric EQ with defeat switch
- Dual band compressor with defeat switch
- Mute/Tune switch
- Built-in chromatic tuner
- Input Gain and Output Level controls
- Line level, instrument level and dry outputs
- Pre and Post balanced XLR outputs with Ground Lift
- Aux input
- Phones output
- Carry bag included

03615880

**TRACE  
ELLIOT®**



**INSTRUMENT AMPLIFIERS**



**INSTRUMENTS**



**PRO AUDIO**

**REPLACEMENT  
SPEAKERS**

**ACCESSORIES**

**MULTIMEDIA**

**APPAREL**



**PEAVEY.COM**